



PRODUCT CATALOGUE AND PRICE LIST

VERSION **24**



Hose Assemblies | Ambulance Pipeline Equipment | Change Over Valves | Terminal Units | Flowmeters
Pipeline Suction | Electric Suction | Regulators | Pipeline Accessories | Medical Gas Plant
Medical Gas Test Equipment | Anaesthesia and Gas Scavenging Systems (AGSS)



MEC are a leading manufacturer and worldwide supplier of Medical Gas Equipment for Hose Assemblies, Oxygen Therapy Equipment, Medical Gas Test Equipment, Anaesthetic Gas Scavenging Systems (AGSS), Suction, Flowmeters, Electric Suction, Regulators and more.

With over 50 years experience in the medical gas industry, the company has developed a strong reputation for design, manufacture, quality and excellent customer service with full technical support and advice.

With full research and design capabilities using the latest CNC technology allowing us to cope with most manufacturing requirements. Coupled with in house design, we can adapt to our customers needs and requirements, allowing us to have a quicker response, and offer excellent customer service.

To order by email, web, or post please forward your purchase order to:

MEC Medical Ltd | MEC House, 8 Fountain Drive, Mead Lane, Hertford, SG13 7UB, United Kingdom

☎ +44 (0) 1992 661 111 sales@mecmedical.com www.mecmedical.com

All major credit cards accepted.

NOTES 1. Although every effort is made to maintain the prices as listed, MEC Medical Ltd reserves the right to amend specification and/or prices without prior notification. 2. All prices are in UK Pounds Sterling, Nett, Ex-Works, exclusive of packing, delivery and VAT. 3. Please quote the catalogue reference number or part number and description on your order. If in doubt please do not hesitate to contact the MEC Medical sales office for assistance. 4. Due to a policy of continual improvement, product appearance may vary from photographs. 5. Terms and Conditions are available on request. 6. Prices effective from date of publication. 7. Quoted standards correct at time of publication.

CONTENTS

HOSES HOSE ASSEMBLIES	04 - 08
HOSES CUSTOMISED ASSEMBLIES	08
PROBES + NISTS	09 - 12
PROBES + NISTS INTERNATIONAL	13 - 14
TERMINAL UNITS ORB SMOOTHFLOW	15 - 16
TERMINAL UNITS DOUBLE TERMINAL UNITS AND ACCESSORIES	17
FLOWMETERS BOBBIN FLOWMETERS	18 - 20
FLOWMETERS DIAL FLOWMETERS	21
REGULATORS SINGLE STAGE REGULATORS	21
REGULATORS COMPACT REGULATORS	22
REGULATORS DIAL FLOW REGULATORS	23
REGULATORS DIAL REGULATORS MRI COMPATIBLE	24
REGULATORS TWO STAGE REGULATORS	24 - 26
REGULATORS PRESSURE REDUCING REGULATORS	26
SUCTION SUCTION CONTROLLERS	27
SUCTION SUCTION UNITS	28
SUCTION INJECTOR SUCTION	28
SUCTION ELECTRIC SUCTION	29 - 30
SUCTION PORTABLE SUCTION	30 - 31
AMBULANCE ORB PIPELINE SYSTEMS	32
AMBULANCE TERMINAL UNITS	33
AMBULANCE LOW PRESSURE PANEL	34
AMBULANCE CHANGE OVER UNITS	34 - 38
DEMAND VALVES	39
GAS SPECIFIC SCHRADER ADAPTORS	40 - 43
PENDANTS TERMINAL UNITS	44
PENDANTS SPLITTER UNIT	45
ANAESTHETIC GAS SCAVENGING SYSTEMS	45
PURAIR SCAVENGING SYSTEMS	46 - 47
PERSONAL MONITORS	47
EQUIPMENT MOUNTING RAILS	48
EQUIPMENT MOUNTING DRIP MOUNTING AND STANDS	48 - 49
CYLINDER TROLLEYS AND BRACKETS	50
MEDICAL CYLINDER CHART	51
EMERGENCY KITS	52
CHANGE OVER VALVE HOSE ASSEMBLY	52
TEST EQUIPMENT	53 - 62
TEST EQUIPMENT RECALIBRATION	63 - 64
HIRE EQUIPMENT	64
SCAVENGING PLANT SINGLE PHASE	64
SCAVENGING PLANT THREE PHASE	65
PLANT	65 - 66
ACCESSORIES AND SPARES	66 - 78

HOSES | HOSE ASSEMBLIES

MEC supplies a complete range of Medical Gas Hoses which are fully compliant to current ISO 5359 for the manufacture of medical gas hose assemblies. All hoses are CE marked.

- 3M coloured gas specific anti-static hose
- British standard remote probe
- Phthalate free
- Anti-Microbial



HA1

HOSE ASSEMBLY - 3M

BS Probe - NIST Probe + Nut

- NIST Probe + NIST Nut
- MRI compatible

GAS	PART No.	PRICE Ea.
O2	HA1	
O2/N2O	HA2	
N2O	HA3	
Air-7	HA4	
Air-4	HA5	
Vacuum	HA6	



HA5RA

HOSE ASSEMBLY - 3M

BS Right Angle Probe - NIST Probe + Nut

- British standard remote probe 90°
- NIST Probe + NIST Nut
- MRI compatible

GAS	PART No.	PRICE Ea.
O2	HA1RA	
O2/N2O	HA2RA	
N2O	HA3RA	
Air-7	HA4RA	
Air-4	HA5RA	
Vacuum	HA6RA	



HA1SRV

HOSE ASSEMBLY - 3M

BS Probe Slow Release Valve - NIST Probe + Nut

- Slow release valve for comfort release when disconnecting from outlet point
- MRI compatible

GAS	PART No.	PRICE Ea.
O2	HA1SRV	
O2/N2O	HA2SRV	
N2O	HA3SRV	
Air-7	HA4SRV	
Air-4	HA5SRV	
Vacuum (Excludes Valve)	HA6SRV	



HA1RAN

HOSE ASSEMBLY - 3M

90° NIST Probe + Nut

- 90° NIST Probe + Nut
- MRI compatible

GAS	PART No.	PRICE Ea.
O2	HA1RAN	
O2/N2O	HA2RAN	
N2O	HA3RAN	
Air-7	HA4RAN	
Air-4	HA5RAN	
Vacuum	HA6RAN	



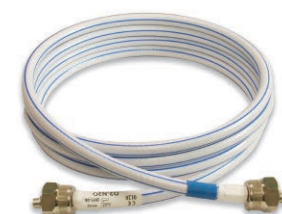
HA1DS

HOSE ASSEMBLY - 3M

DISS Nut + Hose Tail - BS Probe

- DISS Nut and Hose Tail
- MRI compatible

GAS	PART No.	PRICE Ea.
O2	HA1DS	
O2/N2O	HA2DS	
N2O	HA3DS	
Air-7	HA4DS	
Air-4	HA5DS	
Vacuum	HA6DS	



BHA2

HOSE ASSEMBLY - 3M

NIST Probe + Nut - NIST Probe + Nut

- NIST Probe + Nut
- Gas specific NIST Probe
- Gas specific NIST Nut
- MRI compatible

GAS	PART No.	PRICE Ea.
O2	BHA1	
O2/N2O	BHA2	
N2O	BHA3	
Air-7	BHA4	
Air-4	BHA5	
Vacuum	BHA6	

HOSES | HOSE ASSEMBLIES



19226HA

SCHRADER HOSE ASSEMBLY - 3M

BS Probe - Schrader

- British standard gas specific Schrader adaptor

GAS	PART No.	PRICE Ea.
O2	19221HA	
O2/N2O	19222HA	
N2O	19223HA	
Air-7	19224HA	
Air-4	19225HA	
Vacuum	19226HA	



19221HAN

SCHRADER HOSE ASSEMBLY - 3M

NIST Probe + Nut - Schrader

- British standard gas specific Schrader adaptor

GAS	PART No.	PRICE Ea.
O2	19221HAN	
O2/N2O	19222HAN	
N2O	19223HAN	
Air-7	19224HAN	
Air-4	19225HAN	
Vacuum	19226HAN	



HA68161

EXTENSION HOSE ASSEMBLY - 3M

BS Probe - Pendant Outlet

- British standard gas specific pendant head
- MRI compatible

GAS	PART No.	PRICE Ea.
O2	HA68161	
O2/N2O	HA68162	
N2O	HA68163	
Air-7	HA68164	
Air-4	HA68165	
Vacuum	HA68166	
AGSS	231720HEXT	



HA3BN

HOSE ASSEMBLY - 3M

3/8" BSP Bullnose Probe + 3/8" BSP Nut - BS Probe

- 3/8" BSP Nut
- Bullnose probe tail
- MRI compatible

GAS	PART No.	PRICE Ea.
O2	HA1BN	
O2/N2O	HA2BN	
N2O	HA3BN	
Air-7	HA4BN	
Air-4	HA5BN	
Vacuum	HA6BN	



BHA1008

HOSE ASSEMBLY - 3M

NIST Probe + Nut - 3/8" BSP Bullnose Probe + 3/8" BSP Nut

- 3/8" BSP Nut
- Bullnose probe tail
- Gas specific NIST Probe
- Gas specific NIST Nut
- MRI compatible

GAS	PART No.	PRICE Ea.
O2	BHA1008	
O2/N2O	BHA2008	
N2O	BHA3008	
Air-7	BHA4008	
Air-4	BHA5008	
Vacuum	BHA6008	



008HA4

HOSE ASSEMBLY - 3M

3/8" BSP Bullnose Probe + 3/8" BSP Nut - 3/8" BSP Bullnose Probe + 3/8" BSP Nut

- 3/8" BSP Nut
- Bullnose probe tail
- MRI compatible

GAS	PART No.	PRICE Ea.
O2	008HA1	
O2/N2O	008HA2	
N2O	008HA3	
Air-7	008HA4	
Air-4	008HA5	
Vacuum	008HA6	

HOSES | HOSE ASSEMBLIES



601205BT

TWIN SCHRADER HOSE ASSEMBLY - 3M

BS Probe - Twin Schrader 50mm Bar

- British Standard gas specific
Twin Schrader adaptors

GAS	PART No.	PRICE Ea.
O2	601201BT	
O2/N2O	601202BT	
N2O	601203BT	
Air-7	601204BT	
Air-4	601205BT	
Vacuum	601206BT	



601205BTR

TWIN SCHRADER HOSE ASSEMBLY

Rail Clamp 50mm Bar - BS Probe 1.5m

- British Standard gas specific
Twin Schrader adaptors

GAS	PART No.	PRICE Ea.
O2	601201BTR	
O2/N2O	601202BTR	
N2O	601203BTR	
Air-7	601204BTR	
Air-4	601205BTR	
Vacuum	601206BTR	



601206BTRL

TWIN SCHRADER HOSE ASSEMBLY

Rail Clamp 100mm Bar - BS Probe 1.5m

- British Standard gas specific
Twin Schrader adaptors

GAS	PART No.	PRICE Ea.
O2	601201BTRL	
O2/N2O	601202BTRL	
N2O	601203BTRL	
Air-7	601204BTRL	
Air-4	601205BTRL	
Vacuum	601206BTRL	



601205BTL

TWIN SCHRADER HOSE ASSEMBLY - 3M

BS Probe - Twin Schrader 100mm Bar

- British Standard gas specific
Twin Schrader adaptors

GAS	PART No.	PRICE Ea.
O2	601201BTL	
O2/N2O	601202BTL	
N2O	601203BTL	
Air-7	601204BTL	
Air-4	601205BTL	
Vacuum	601206BTL	



601305BT

TRIPLE SCHRADER HOSE ASSEMBLY - 3M

BS Probe - Three Schrader 100mm Bar

- British Standard gas specific
Three Schrader adaptors

GAS	PART No.	PRICE Ea.
O2	601301BT	
O2/N2O	601302BT	
N2O	601303BT	
Air-7	601304BT	
Air-4	601305BT	
Vacuum	601306BT	



601306BTL

TRIPLE SCHRADER HOSE ASSEMBLY

Rail Clamp 100mm Bar - BS Probe 1.5m

- British Standard gas specific
Three Schrader adaptors

GAS	PART No.	PRICE Ea.
O2	601301BTRL	
O2/N2O	601302BTRL	
N2O	601303BTRL	
Air-7	601304BTRL	
Air-4	601305BTRL	
Vacuum	601306BTRL	

HOSES | HOSE ASSEMBLIES



201902HA

TWIN SCHRADER ADAPTORS + HOSE ASSEMBLY - 3M

BS Probe - Twin Schraders

- British standard gas specific Twin Schrader adaptors

GAS	PART No.	PRICE Ea.
O2	201901HA	
O2/N2O	201902HA	
N2O	201903HA	
Air-7	201904HA	
Air-4	201905HA	
Vacuum	201906HA	



601201SH

SCHRADER HOSE WITH RAIL MOUNT - 1M

- 1m coloured gas specific anti-static hose
- British standard gas specific Schrader adaptor on rail clamp

GAS	PART No.	PRICE Ea.
O2	601201SH	
O2/N2O	601202SH	
N2O	601203SH	
Air-7	601204SH	
Air-4	601205SH	
Vacuum	601206SH	



601201SHT

TWIN SCHRADER HOSE WITH RAIL MOUNT - 1M TWIN VERSION

- 1m coloured gas specific anti-static hose
- British standard gas specific Twin Schrader adaptors on rail clamp

GAS	PART No.	PRICE Ea.
O2	601201SHT	
O2/N2O	601202SHT	
N2O	601203SHT	
Air-7	601204SHT	
Air-4	601205SHT	
Vacuum	601206SHT	



FPH4RA

HOSE ASSEMBLY - 5M

Male NIST - Female NIST 90°

- AGSS versions available for all manufacturers outlets
- MRI compatible

GAS	PART No.	PRICE Ea.
O2	FPH1RA	
O2/N2O	FPH2RA	
N2O	FPH3RA	
Air-7	FPH4RA	
Air-4	FPH5RA	
Vacuum	FPH6RA	
AGSS		



BHA1FN

HOSE ASSEMBLY - 3M

Male NIST - Female NIST

- AGSS versions available for all manufacturers outlets
- MRI compatible

GAS	PART No.	PRICE Ea.
O2	BHA1FN	
O2/N2O	BHA2FN	
N2O	BHA3FN	
Air-7	BHA4FN	
Air-4	BHA5FN	
Vacuum	BHA6FN	
AGSS		



HA5MS

HOSE ASSEMBLY - 3M

NIST Probe + Nut - Mini Schrader Probe

- Gas specific Mini Schrader
- Gas specific NIST Nut
- MRI compatible

GAS	PART No.	PRICE Ea.
O2	HA1MS	
Air-4	HA5MS	

HOSES | HOSE ASSEMBLIES



HA3BLK

HOSE ASSEMBLY - 3M

BS Probe - Pin Index Adaptor

- Pin index adaptor
- MRI compatible

GAS	PART No.	PRICE Ea.
O2	HA1BLK	
N2O	HA3BLK	



AIR-4-GUN

BLOW GUN HOSE

- British standard remote probe

Blow gun with 3M Hose

GAS	PART No.	PRICE Ea.
Air-7	AIR-7-GUN	
Air-4	AIR-4-GUN	



HA7INS14X1

CO2 INSUFFLATOR HOSE ASSEMBLY - HIGH PRESSURE

1/4" BSP or 7/16" JIC - CO2 Pin Index Yoke

1/4" BSP - CO2 Pin Index Yoke

LENGTH	PART No.	PRICE Ea.
1M	HA7INS14X1	
2M	HA7INS14X2	
3M	HA7INS14	

7/16" JIC - CO2 Pin Index Yoke

LENGTH	PART No.	PRICE Ea.
1M	HA7JIC716X1	
2M	HA7JIC716X2	
3M	HA7JIC716	

- CO2 Pin index yoke
- High pressure assembly
- For direct connection to CO2 Pin index bottles

Other Connectors Available | (1M shown)

HOSES | CUSTOMISED ASSEMBLIES

Now you can put together a complete enquiry for any Hose Assemblies you need by simply visiting the link to our web site '**Hose Configurator**' page. Simply select a Gas type (e.g. Oxygen), the inlet fitting and outlet fitting from the image icons, using the scroll arrows to access the full range.

Then add the flexible hose length and the quantity you require. Finally press '**Build Hose**' to have the specification assemble on screen. At this stage you can press '**Build Another**' to add further assemblies. Finally fill in the short form and press '**Send**'.

This way you can put together a complex order of Hose Assemblies clearly and quickly to send directly to us at MEC via email.

We are always happy to help or provide further information: Telephone us on **+44 (0) 1922 661 111**. Email us at **sales@mecmedical.com**



MEC

Other hose lengths and connectors can be reconditioned – Please call for a quotation.

PROBES AND NISTS



RP1

REMOTE BS PROBE

To BS 5682

- Stainless steel
- One piece construction
- Gas specific engraving
- Machined to BS 5682
- MRI compatible

GAS	PART No.	PRICE Ea.
O2	RP1	
O2/N2O	RP2	
N2O	RP3	
Air-7	RP4	
Air-4	RP5	
Vacuum	RP6	
Heliox	RP9	



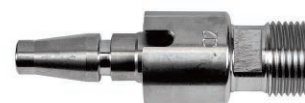
RP1RA

REMOTE RIGHT ANGLED BS PROBE

To BS 5682

- Stainless steel
- Gas specific engraving
- Machined to BS 5682
- MRI compatible

GAS	PART No.	PRICE Ea.
O2	RP1RA	
O2/N2O	RP2RA	
N2O	RP3RA	
Air-7	RP4RA	
Air-4	RP5RA	
Vacuum	RP6RA	



DP1

DIRECT BS PROBE

3/8" BSP Thread to BS 5682

- Stainless steel
- One piece construction
- Gas specific engraving
- Machined to BS 5682
- MRI compatible

GAS	PART No.	PRICE Ea.
O2 - Direct	DP1	
O2/N2O - Direct	DP2	
N2O - Direct	DP3	
Air-7 - Direct	DP4	
Air-4 - Direct	DP5	
Vacuum - Direct	DP6	
Vacuum - UNF LH Thread	DP6S	
Heliox - Direct	DP9	



161812/1

DIRECT BS PROBE

1/4"BSPT Thread

- Stainless steel
- One piece construction
- Gas specific engraving
- Machined to BS 5682
- MRI compatible

GAS	PART No.	PRICE Ea.
O2	161812/1	
O2/N2O	161812/2	
N2O	161812/3	
Air-7	161812/4	
Air-4	161812/5	
Vacuum	161812/6	



DP1DISS

O2 DIRECT BS PROBE

9/16" UNF DISS Thread

- Stainless steel
- Gas specific engraving
- Machined to BS 5682
- MRI compatible

GAS	PART No.	PRICE Ea.
O2	DP1DISS	



DP1M1/8BSP

DIRECT BS PROBE

M1/8BSP Thread

- Stainless steel
- One piece construction
- Gas specific engraving
- Machined to BS 5682
- MRI compatible

GAS	PART No.	PRICE Ea.
O2	DP1M1/8BSP	
O2/N2O	DP2M1/8BSP	
N2O	DP3M1/8BSP	
Air-7	DP4M1/8BSP	
Air-4	DP5M1/8BSP	
Vacuum	DP6M1/8BSP	

PROBES AND NISTS



DP1M1/8BSPT

DIRECT BS PROBE

M1/8BSPT Thread

- Stainless steel
- One piece construction
- Gas specific engraving
- Machined to BS 5682
- MRI compatible

GAS	PART No.	PRICE Ea.
O2	DP1M1/8BSPT	
O2/N2O	DP2M1/8BSPT	
N2O	DP3M1/8BSPT	
Air-7	DP4M1/8BSPT	
Air-4	DP5M1/8BSPT	
Vacuum	DP6M1/8BSPT	



DP1M1/8NPT

DIRECT BS PROBE

M1/8NPT Thread

- Stainless steel
- One piece construction
- Gas specific engraving
- Machined to BS 5682
- MRI compatible

GAS	PART No.	PRICE Ea.
O2	DP1M1/8NPT	
O2/N2O	DP2M1/8NPT	
N2O	DP3M1/8NPT	
Air-7	DP4M1/8NPT	
Air-4	DP5M1/8NPT	
Vacuum	DP6M1/8NPT	



14181

NIST PROBE + NUT

With 'O' Ring + Nut to ISO 18082

- Stainless steel NIST Probe with 'O' Ring
- Gas specific engraving on NIST Probe and Nut
- Gas specific Indexing
- MRI compatible

GAS	PART No.	PRICE Ea.
O2	14181	
O2/N2O	14182	
N2O	14183	
Air-7	14184	
Air-4	14185	
Vacuum	14186	
CO2	14187	
N2	14188	
Heliox [He ≤ 80% (Volume Fraction)]	14189	
AGSS	231750	
(To fit MEC female NIST only)		



1416/118

SHORT NIST PROBE WITH 'O' RING

1/8" BSP Thread

- Stainless steel NIST Probe with 'O' Ring
- Gas specific Indexing
- Gas specific engraving on NIST Probe
- MRI compatible

GAS	PART No.	PRICE Ea.
O2	1416/118	
O2/N2O	1416/218	
N2O	1416/318	
Air-7	1416/418	
Air-4	1416/518	
Vacuum	1416/618	
NGS	1416/NGS	



14161

NIST PROBE WITH 'O' RING

- Stainless steel NIST Probe with 'O' Ring
- Gas specific Indexing
- Gas specific engraving on NIST Probe
- MRI compatible

GAS	PART No.	PRICE Ea.
O2	14161	
O2/N2O	14162	
N2O	14163	
Air-7	14164	
Air-4	14165	
Vacuum	14166	
CO2	141610	
Heliox [He ≤ 80% (Volume Fraction)]	14169	
AGSS	231732	



14141

NIST NUT

- Stainless Steel
- Gas specific engraving on NIST Nut
- MRI compatible

GAS	PART No.	PRICE Ea.
O2	14141	
O2/N2O	14142	
N2O	14143	
Air-7	14144	
Air-4	14145	
Vacuum	14146	
CO2	14147	
Heliox	14149	
AGSS	231733	

PROBES AND NISTS



6816214

NIST WITH TAIL

With Non-Return Valve (Not Vacuum)

- Gas specific Female NIST
- Gas specific engraving on Female NIST
- MRI compatible

GAS	PART No.	PRICE Ea.
O2	6816211	
O2/N2O	6816212	
N2O	6816213	
Air-7	6816214	
Air-4	6816215	
Vacuum	6816216	



681631T

NIST WITH TAIL

Without Non-Return Valve

- Gas specific Female NIST
- Gas specific engraving on Female NIST
- MRI compatible

GAS	PART No.	PRICE Ea.
O2	681631T	
O2/N2O	681632T	
N2O	681633T	
Air-7	681634T	
Air-4	681635T	
Vacuum	681636T	



6816213RA

RIGHT ANGLED FEMALE NIST

Without Non-Return Valve

- Gas specific Female NIST
- Gas specific engraving on Female NIST
- MRI compatible

GAS	PART No.	PRICE Ea.
O2	6816211RA	
O2/N2O	6816212RA	
N2O	6816213RA	
Air-7	6816214RA	
Air-4	6816215RA	
Vacuum	6816216RA	



14161RA

RIGHT ANGLED MALE NIST

- Gas specific Male NIST
- Gas specific engraving
- MRI compatible

GAS	PART No.	PRICE Ea.
O2	14161RA	
O2/N2O	14162RA	
N2O	14163RA	
Air-7	14164RA	
Air-4	14165RA	
Vacuum	14166RA	



008BNA

BN PROBE

+ BSP Hex Nut Assembly

PART No.	PRICE Ea.
008BNA (3/8" BSP)	
009BNA (1/4" BSP)	



008

BN PROBE TAIL

PART No.	PRICE Ea.
008 (For use with 3/8" Nut)	
009 (For use with 1/4" Nut)	

PROBES AND NISTS



P202293

BSP HEX NUT PLATED

PART No.	PRICE Ea.
P202293 (3/8" BSP)	
P202297 (1/4" BSP)	



163610

CEILING NIST BLANKING PLUG

• Universal NIST for blanking pressure gases

GAS	PART No.	PRICE Ea.
Pressure Gas	163610	
AGSS	163620	

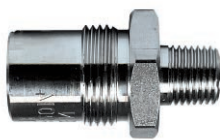


3601518BS

FEMALE NIST

1/8" BSP Thread

GAS	PART No.	PRICE Ea.
O2	3601118BS	
Air-4	3601518BS	

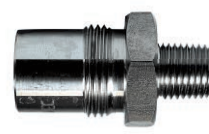


360111/4BSPT

FEMALE NIST

1/4" BSPT Thread

GAS	PART No.	PRICE Ea.
O2	360111/4BSPT	
Air-4	360151/4BSPT	



3601114NPT

FEMALE NIST

1/4" NPT Thread

GAS	PART No.	PRICE Ea.
O2	3601114NPT	
Air-4	3601514NPT	



3601

CEILING NIST - FEMALE

Copper Tube - 15mm Dia - 150mm Length

- Gas specific Female NIST
- Gas specific engraving
- MRI compatible
- With Blanking Nut

GAS	PART No.	PRICE Ea.
O2	3601	
O2/N2O	3602	
N2O	3603	
Air-7	3604	
Air-4	3605	
Vacuum	3606	
CO2	3607	
Nitrogen	3608	
AGSS	231724	



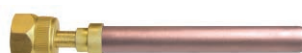
3601RA

CEILING NIST - FEMALE 90°

Copper Tube - 15mm Dia - 150mm Length

- Gas specific Female NIST
- Gas specific engraving
- MRI compatible
- With Blanking Nut

GAS	PART No.	PRICE Ea.
O2	3601RA	
O2/N2O	3602RA	
N2O	3603RA	
Air-7	3604RA	
Air-4	3605RA	
Vacuum	3606RA	
CO2	3607RA	
Nitrogen	3608RA	
AGSS	231724RA	



3601N

CEILING NIST - MALE

Copper Tube - 15mm Dia - 150mm Length

- Gas specific Male NIST
- Gas specific engraving
- MRI compatible

GAS	PART No.	PRICE Ea.
O2	3601N	
O2/N2O	3602N	
N2O	3603N	
Air-7	3604N	
Air-4	3605N	
Vacuum	3606N	
CO2	3607N	
Nitrogen	3608N	
AGSS	231724N	



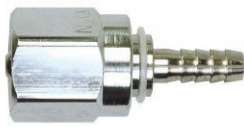
3601NRA

CEILING NIST - RIGHT ANGLED MALE

Copper Tube - 15mm Dia - 150mm Length

- Gas specific Male NIST
- Gas specific engraving
- MRI compatible

GAS	PART No.	PRICE Ea.
O2	3601NRA	
O2/N2O	3602NRA	
N2O	3603NRA	
Air-7	3604NRA	
Air-4	3605NRA	
Vacuum	3606NRA	
CO2	3607NRA	
Nitrogen	3608NRA	
AGSS	231724NRA	



53100026

DISS FEMALE

Nut + Hose Tail (North American Standard)

GAS	PART No.	PRICE Ea.
O2	53100025	
N2O	53100026	
Air	53100027	
Instrument Air	53100024	
Vacuum	53100028	
CO2	53100029	



53100070

OHMEDA PROBE

(North American Standard)

GAS	PART No.	PRICE Ea.
O2	53100067	
N2O	53100068	
Air	53100069	
Vacuum	53100070	



53100065

PURITAN PROBE

(North American Standard)

GAS	PART No.	PRICE Ea.
O2	53100063	
N2O	53100064	
Air	53100065	
Vacuum	53100066	

MEC stocks a wide range of international medical gas fittings.
Hose assemblies for both ISO and US standards can be
manufactured to customers requirements.



53100071

CHEMETRON PROBE

(North American Standard)

GAS	PART No.	PRICE Ea.
O2	53100071	
N2O	53100072	
Air	53100073	
Vacuum	53100074	



53100031

DISS MALE

(USA Standard)

GAS	PART No.	PRICE Ea.
O2	53100031	
Air	53100032	



DINRP1

DIN REMOTE PROBE

(German Standard)

GAS	PART No.	PRICE Ea.
O2	DINRP1	
N2O	DINRP3	
Air-800	DINRP4	
Air	DINRP5	
Vacuum	DINRP6	
CO2	DINRP7	



DINRP1RA

DIN RIGHT ANGLE PROBE

(German Standard)

GAS	PART No.	PRICE Ea.
O2	DINRP1RA	
N2O	DINRP3RA	
Air-800	DINRP4RA	
Air	DINRP5RA	
Vacuum	DINRP6RA	
CO2	DINRP7RA	



AGARP1

AGA REMOTE PROBE

(Scandinavian Standard)

GAS	PART No.	PRICE Ea.
O2	AGARP1	
O2/N2O	AGARP2	
N2O	AGARP3	
Air-800	AGARP4	
Air	AGARP5	
Vacuum	AGARP6	
CO2	AGARP7	



AGARP1RA

AGA RIGHT ANGLE PROBE

(Scandinavian Standard)

GAS	PART No.	PRICE Ea.
O2	AGARP1RA	
O2/N2O	AGARP2RA	
N2O	AGARP3RA	
Air-800	AGARP4RA	
Air	AGARP5RA	
Vacuum	AGARP6RA	
CO2	AGARP7RA	



AFNRP1

AFNOR REMOTE PROBE

(French Standard)

GAS	PART No.	PRICE Ea.
O2	AFNRP1	
O2/N2O	AFNRP2	
N2O	AFNRP3	
Air-7	AFNRP4	
Air-4	AFNRP5	
Vacuum	AFNRP6	
CO2	AFNRP7	



AFNRP1RA

AFNOR RIGHT ANGLE PROBE

(French Standard)

GAS	PART No.	PRICE Ea.
O2	AFNRP1RA	
O2/N2O	AFNRP2RA	
N2O	AFNRP3RA	
Air-7	AFNRP4RA	
Air-4	AFNRP5RA	
Vacuum	AFNRP6RA	
CO2	AFNRP7RA	



UNIRP1

UNIFOR REMOTE PROBE

(Italian Standard)

GAS	PART No.	PRICE Ea.
O2	UNIRP1	
O2/N2O	UNIRP2	
N2O	UNIRP3	
Air-7	UNIRP4	
Air-4	UNIRP5	
Vacuum	UNIRP6	
CO2	UNIRP7	



UNIRP1RA

UNIFOR RIGHT ANGLE PROBE

(Italian Standard)

GAS	PART No.	PRICE Ea.
O2	UNIRP1RA	
O2/N2O	UNIRP2RA	
N2O	UNIRP3RA	
Air-7	UNIRP4RA	
Air-4	UNIRP5RA	
Vacuum	UNIRP6RA	
CO2	UNIRP7RA	



MEC's medical case outlet is fully compliant to the requirements of ISO 9170-1. The terminal units feature a larger 51mm collar which is completely smooth, reducing the chance of dirt build up. The terminal unit also includes two independent springs for balance and durability. All second fix parts and boxes include a silver antimicrobial additive for inherent antimicrobial protection.

- Gas specific sockets with non-interchangeability
- First Fix supplied with a length of copper pipe
- Complete with fixing screws to secure both First Fix and Box to base plate
- First and Second Fix supplied
- Fully compliant with all current standards



S202101N

ORB SMOOTHFLOW SURFACE TERMINAL UNITS

GAS	PART No.	PRICE Ea.
O2	S202101N	
O2/N2O	S202102N	
N2O	S202103N	
Air-7	S202104N	
Air-4	S202105N	
Vacuum	S202106N	
CO2	S202107N	
N2	S202108N	
Heliox	S202109N	
AGSS	S231700N	



F202104N

ORB SMOOTHFLOW FLUSH TERMINAL UNITS

GAS	PART No.	PRICE Ea.
O2	F202101N	
O2/N2O	F202102N	
N2O	F202103N	
Air-7	F202104N	
Air-4	F202105N	
Vacuum	F202106N	
CO2	F202107N	
N2	F202108N	
Heliox	F202109N	
AGSS	F231700N	



T202106N

ORB SMOOTHFLOW TRUNKING TERMINAL UNITS

GAS	PART No.	PRICE Ea.
O2	T202101N	
O2/N2O	T202102N	
N2O	T202103N	
Air-7	T202104N	
Air-4	T202105N	
Vacuum	T202106N	
CO2	T202107N	
N2	T202108N	
Heliox	T202109N	
AGSS	T231700N	



B202101N

ORB SMOOTHFLOW BOOM TERMINAL UNITS

Female NIST Fitting

GAS	PART No.	PRICE Ea.
O2	B202101N	
O2/N2O	B202102N	
N2O	B202103N	
Air-7	B202104N	
Air-4	B202105N	

GAS	PART No.	PRICE Ea.
Vacuum	B202106N	
Heliox	B202109N	
CO2	B202107N	
N2	B202108N	
AGSS	B231700N	

TERMINAL UNITS | ORB SMOOTHFLOW



- Supplied with gas specific Male NIST
- Complete with fixing screws to secure outlet

R202101

ORB SMOOTHFLOW STRAIGHT EXIT PENDANT OUTLET

GAS	PART No.	PRICE Ea.
O2	R202101	
O2/N2O	R202102	
N2O	R202103	
Air-7	R202104	
Air-4	R202105	
Vacuum	R202106	
CO2	R202107	
N2	R202108	
AGSS	R231700	



- Supplied with gas specific Male NIST
- Complete with fixing screws to secure outlet

A202103

ORB SMOOTHFLOW 45° EXIT PENDANT OUTLET

GAS	PART No.	PRICE Ea.
O2	A202101	
O2/N2O	A202102	
N2O	A202103	
Air-7	A202104	
Air-4	A202105	
Vacuum	A202106	
CO2	A202107	
N2	A202108	
AGSS	A231700	



- Supplied with 12mm Copper Stub
- Complete with fixing screws to secure outlet

C202101

ORB SMOOTHFLOW COPPER STUB PENDANT OUTLET

GAS	PART No.	PRICE Ea.
O2	C202101	
O2/N2O	C202102	
N2O	C202103	
Air-7	C202104	
Air-4	C202105	
Vacuum	C202106	
CO2	C202107	
N2	C202108	
AGSS	C231700	



- Supplied with gas specific Male NIST
- Complete with fixing screws to secure outlet

D202101

ORB 90° SMOOTHFLOW EXIT PENDANT OUTLET

GAS	PART No.	PRICE Ea.
O2	D202101	
O2/N2O	D202102	
N2O	D202103	
Air-7	D202104	
Air-4	D202105	
Vacuum	D202106	
CO2	D202107	
N2	D202108	
AGSS	D231700	

TERMINAL UNITS | DOUBLE TERMINAL UNITS AND ACCESSORIES

The **MEC** Double Terminal Units are a valuable and cost effective option when an extra outlet point is required. With no installation, the unit can be rail or wall mounted and for positioning flexibility, it is connected with a one metre hose assembly. The units fully conform with ISO 9170-1.

DOUBLE TERMINAL UNIT

With 1m Hose Assembly



W40201N

Wall Fixing

GAS	PART No.	PRICE Ea.
O2	W40201N	
O2/N2O	W40202N	
N2O	W40203N	
Air-7	W40204N	
Air-4	W40205N	
Vacuum	W40206N	

- Twin gas specific outlet points
- 1m of gas specific hose with BS Probe
- Wall or Rail mounting
- Fully conforming with ISO 9170-1

Rail Fixing

GAS	PART No.	PRICE Ea.
O2	R40201N	
O2/N2O	R40202N	
N2O	R40203N	
Air-7	R40204N	
Air-4	R40205N	
Vacuum	R40206N	

Alternative hose lengths may be specified at time of order



40208



40207

BRACKETS

DESCRIPTION	PART No.	PRICE Ea.
Wall Mounting Bracket	40208	
Rail Mounting Bracket	40207	



H40201N

- 1m coloured gas specific anti-static hose
- British Standard remote probe
- Cover assembly included
- For use with MEC Double Terminal Units

HOSE ASSEMBLY - 1M

GAS	PART No.	PRICE Ea.
O2	H40201N	
O2/N2O	H40202N	
N2O	H40203N	
Air-7	H40204N	
Air-4	H40205N	
Vacuum	H40206N	

FLOWMETERS | BOBBIN FLOWMETERS

The **MEC** Flowmeter range fully complies with the requirements of ISO15002 Flow metering devices for the connection to terminal units of medical gas pipeline systems. **MEC's** Flowmeters are calibrated to operate from an inlet pressure of 4 Bar (approx. 60psi) and carry a 7 year function warranty.

- Anodised aluminium body
- Polycarbonate inner outer tube
- Acetal spindle
- White/black Acetal Plastic tubing nipple



60151

SINGLE FLOWMETER

3/8" BSP Nut + Liner

GAS	PART No.	PRICE Ea.
O2 High Flow 0-15Lpm	60151	
O2 High Flow 0-30Lpm	7030	
O2 High Flow 0-70Lpm	7070	
O2 Low Flow 0.15-4.5Lpm	6021	
Air-4 High Flow 0-15Lpm	60155	
Air-4 Low Flow 0.15-4.5Lpm	6025	



6015DP1

SINGLE FLOWMETER

Fixed BS Probe

GAS	PART No.	PRICE Ea.
O2 High Flow 0-15Lpm	6015DP1	
O2 High Flow 0-30Lpm	7030DP1	
O2 High Flow 0-70Lpm	7070DP1	
O2 Low Flow 0.15-4.5Lpm	602DP1	
Air-4 High Flow 0-15Lpm	6015DP5	
Air-4 Low Flow 0.15-4.5Lpm	602DP5	



60151HA1X1

RAIL MOUNTED SINGLE FLOWMETER

With 1m Hose Assembly

GAS	PART No.	PRICE Ea.
O2 High Flow 0-15Lpm	60151HA1X1	
Air-4 High Flow 0-15Lpm	60155HA5X1	



206215HA5X1

RAIL MOUNTED DOUBLE FLOWMETERS

BS Probe

GAS	PART No.	PRICE Ea.
O2 High Flow 0-15Lpm	206211HA1X1	
O2 Low Flow 0.15-4.5Lpm	206021HA1X1	
Air-4 High Flow 0-15Lpm	206215HA5X1	
Air-4 Low Flow 0.15-4.5Lpm	206025HA5X1	



206211NL

DOUBLE FLOWMETERS

3/8"BSP Nut + Liner

GAS	PART No.	PRICE Ea.
O2 High Flow 0-15Lpm	206211NL	
O2 Low Flow 0.15-4.5Lpm	206021NL	
Air-4 High Flow 0-15Lpm	206215NL	
Air-4 Low Flow 0.15-4.5Lpm	206025NL	



206211DP

DOUBLE FLOWMETERS

With BS Probe

GAS	PART No.	PRICE Ea.
O2 High Flow 0-15Lpm	206211DP	
O2 Low Flow 0.15-4.5Lpm	206021DP	
Air-4 High Flow 0-15Lpm	206215DP	
Air-4 Low Flow 0.15-4.5Lpm	206025DP	



206211NB

STRAIGHT BAR DOUBLE FLOWMETERS

50mm Back Bar - 3/8" BSP Nut + Liner

GAS	PART No.	PRICE Ea.
O2 High Flow 0-15Lpm	206211NB	
O2 Low Flow 0.15-4.5Lpm	206021NB	
Air-4 High Flow 0-15Lpm	206215NB	
Air-4 Low Flow 0.15-4.5Lpm	206025NB	



206215B

STRAIGHT BAR DOUBLE FLOWMETERS

50mm Back Bar - With BS Probe

GAS	PART No.	PRICE Ea.
O2 High Flow 0-15Lpm	206211B	
O2 Low Flow 0.15-4.5Lpm	206021B	
Air-4 High Flow 0-15Lpm	206215B	
Air-4 Low Flow 0.15-4.5Lpm	206025B	



206025NBL

STRAIGHT BAR DOUBLE FLOWMETERS

100mm Back Bar - 3/8" BSP Nut + Liner

GAS	PART No.	PRICE Ea.
O2 High Flow 0-15Lpm	206211NBL	
O2 Low Flow 0.15-4.5Lpm	206021NBL	
Air-4 High Flow 0-15Lpm	206215NBL	
Air-4 Low Flow 0.15-4.5Lpm	206025NBL	



206211BL

STRAIGHT BAR DOUBLE FLOWMETERS

100mm Back Bar - With BS Probe

GAS	PART No.	PRICE Ea.
O2 High Flow 0-15Lpm	206211BL	
O2 Low Flow 0.15-4.5Lpm	206021BL	
Air-4 High Flow 0-15Lpm	206215BL	
Air-4 Low Flow 0.15-4.5Lpm	206025BL	



206211SNB

STRAIGHT BAR SCHRADER + FLOWMETER

50mm Back Bar - 3/8" BSP Nut + Liner

GAS	PART No.	PRICE Ea.
O2 High Flow 0-15Lpm	206211SNB	
O2 Low Flow 0.15-4.5Lpm	206021SNB	
Air-4 High Flow 0-15Lpm	206215SNB	
Air-4 Low Flow 0.15-4.5Lpm	206025SNB	



206025SB

STRAIGHT BAR SCHRADER + FLOWMETER

50mm Back Bar - With BS Probe

GAS	PART No.	PRICE Ea.
O2 High Flow 0-15Lpm	206211SB	
O2 Low Flow 0.15-4.5Lpm	206021SB	
Air-4 High Flow 0-15Lpm	206215SB	
Air-4 Low Flow 0.15-4.5Lpm	206025SB	

FLOWMETERS | BOBBIN FLOWMETERS



206211SNBL

STRAIGHT BAR SCHRADER + FLOWMETER

100mm Back Bar - 3/8" BSP Nut + Liner

GAS	PART No.	PRICE Ea.
O2 High Flow 0-15Lpm	206211SNBL	
O2 Low Flow 0.15-4.5Lpm	206021SNBL	
Air-4 High Flow 0-15Lpm	206215SNBL	
Air-4 Low Flow 0.15-4.5Lpm	206025SNBL	



206215SBL

STRAIGHT BAR SCHRADER + FLOWMETER

100mm Back Bar - With BS Probe

GAS	PART No.	PRICE Ea.
O2 High Flow 0-15Lpm	206211SBL	
O2 Low Flow 0.15-4.5Lpm	206021SBL	
Air-4 High Flow 0-15Lpm	206215SBL	
Air-4 Low Flow 0.15-4.5Lpm	206025SBL	



206211NBHA1X1

STRAIGHT BAR MOUNTED

50mm Back Bar - Double Flowmeters on Rail

GAS	PART No.	PRICE Ea.
O2 High Flow 0-15Lpm	206211NBHA1X1	
O2 Low Flow 0.15-4.5Lpm	206021NBHA1X1	
Air-4 High Flow 0-15Lpm	206215NBHA5X1	
Air-4 Low Flow 0.15-4.5Lpm	206025NBHA5X1	



206215SNBHA5X1

STRAIGHT BAR RAIL MOUNTED

50mm Back Bar - Schrader + Flowmeter on Rail

GAS	PART No.	PRICE Ea.
O2 High Flow 0-15Lpm	206211SNBHA1X1	
O2 Low Flow 0.15-4.5Lpm	206021SNBHA1X1	
Air-4 High Flow 0-15Lpm	206215SNBHA5X1	
Air-4 Low Flow 0.15-4.5Lpm	206025SNBHA5X1	



206025NBLHA5X1

STRAIGHT BAR RAIL MOUNTED

100mm Back Bar - Double Flowmeter on Rail

GAS	PART No.	PRICE Ea.
O2 High Flow 0-15Lpm	206211NBLHA1X1	
O2 Low Flow 0.15-4.5Lpm	206021NBLHA1X1	
Air-4 High Flow 0-15Lpm	206215NBLHA5X1	
Air-4 Low Flow 0.15-4.5Lpm	206025NBLHA5X1	



206211SNBLHA1X1

STRAIGHT BAR RAIL MOUNTED

100mm Back Bar - Schrader + Flowmeter on Rail

GAS	PART No.	PRICE Ea.
O2 High Flow 0-15Lpm	206211SNBLHA1X1	
O2 Low Flow 0.15-4.5Lpm	206021SNBLHA1X1	
Air-4 High Flow 0-15Lpm	206215SNBLHA5X1	
Air-4 Low Flow 0.15-4.5Lpm	206025SNBLHA5X1	

FLOWMETERS | DIAL FLOWMETERS



2515001

DIAL FLOWMETER + FIXED PROBE

- Flow selector with front facing window
- Multiple flow therapy output
- Designed for use with 4 bar oxygen supply

DESCRIPTION	PART No.	PRICE Ea.
O2 0-15 Lpm	2515001	
Air 0-15 Lpm	2515005	
O2 0-25 Lpm	2525001	
Air 0-25 Lpm	2525005	
O2 0-5 Lpm	2505001	
O2 0-3 Lpm	2503011	

Dial Flowmeter 0-3 Lpm

0, 0.1, 0.2, 0.3, 0.4, 0.5, 0.6, 0.7, 0.8, 0.9, 1.0, 1.25, 1.5, 1.75, 2.0, 2.5, 3.0 Lpm

Dial Flowmeter 0-5 Lpm

0, 0.25, 0.5, 0.75, 1.0, 1.25, 1.5, 1.75, 2.0, 2.25, 2.5, 2.75, 3.0, 3.5, 4.0, 4.5, 5.0 Lpm

Dial Flowmeter 0-15 Lpm

0, 0.5, 1.0, 2.0, 3.0, 4.0, 5.0, 6.0, 7.0, 8.0, 9.0, 10.0, 11.0, 12.0, 13.0, 14.0, 15.0 Lpm

Dial Flowmeter 0-25 Lpm

0, 0.5, 1.0, 2.0, 3.0, 4.0, 5.0, 6.0, 7.0, 8.0, 9.0, 10.0, 11.0, 12.0, 14.0, 15.0, 25.0 Lpm

REGULATORS | SINGLE STAGE REGULATORS

The **MEC** range of Single Stage Medical Regulators are designed and manufactured to fully comply with ISO 10524-1.

- 200 bar maximum inlet pressure
- 4 bar pre-set delivery pressure

- Maximum flow rate – 50 l/min
- Bullnose or Pin Index inlet connections available
- Nickel plated inlet and outlet connections
- Robust brass body construction for prolonged service life
- Serial number and replacement date, clearly marked on rear of regulator



6060

SINGLE STAGE REGULATOR

3/8" BSP Outlet

DESCRIPTION	PART No.	PRICE Ea.
O2 Bullnose	6080	
Air-4 Bullnose	6081	
N2O Nut + Stem	6083	
O2 Pin Index	6060	
Air-4 Pin Index	6061	
N2O Pin Index	6063	



6080SH

SINGLE STAGE REGULATOR

Including Schrader

DESCRIPTION	PART No.	PRICE Ea.
O2 Bullnose	6080SH	
Air-4 Bullnose	6081SH	
N2O Nut + Stem	6083SH	
O2 Pin Index	6060SH	
Air-4 Pin Index	6061SH	
N2O Pin Index	6063SH	

REGULATORS | SINGLE STAGE REGULATORS



6060F

SINGLE STAGE REGULATOR

Including Flowmeter 0-15Lpm

DESCRIPTION	PART No.	PRICE Ea.
O2 Bullnose	6080F	
Air-4 Bullnose	6081F	
O2 Pin Index	6060F	
Air-4 Pin Index	6061F	



6080FHS

SINGLE STAGE REGULATOR

Including Flowmeter- 0-15Lpm + Disposable Humidifier, Face Mask with 1.8m Tubing + Spanner

DESCRIPTION	PART No.	PRICE Ea.
O2 Bullnose	6080FHS	
Air-4 Bullnose	6081FHS	
O2 Pin Index	6060FHS	
Air-4 Pin Index	6061FHS	

REGULATORS | COMPACT REGULATORS

MEC Dial Flow Regulators are manufactured with a brass body and choice of Therapy and Schrader outlets. Manufactured to ISO 10524-1.

- Multiple flow therapy output set by a dial 1/2, 1, 2, 3, 4, 6, 8, 10, 15 and MAX 25 litres per minute if specified
- Barbed, fir-tree style connector or Schrader
- Complies with all current standards



4918552

PIN INDEX REGULATOR + SCHRADER - NON THERAPY

- Oxygen regulator with Pin Index input
- Single Schrader outlet



4918552B

BULLNOSE REGULATOR + SCHRADER - NON THERAPY

- Oxygen regulator with Bullnose input
- Single Schrader outlet



4918552BT

BULLNOSE REGULATOR + TWIN SCHRADER - NON THERAPY

- Oxygen regulator with Bullnose input
- Twin Schrader outlet



4918552T

PIN INDEX REGULATOR + TWIN SCHRADER - NON THERAPY

- Oxygen regulator with Pin Index input
- Twin Schrader outlet

DESCRIPTION	PART No.	PRICE Ea.	DESCRIPTION	PART No.	PRICE Ea.	DESCRIPTION	PART No.	PRICE Ea.	DESCRIPTION	PART No.	PRICE Ea.
O2 4 bar output	4918552		O2 4 bar output	4918552B		O2 4 bar output	4918552BT		O2 4 bar output	4918552T	
Air-4 4 bar output	4918552A		Air-4 4 bar output	4918552BA		Air-4 4 bar output	4918552BTA		Air-4 4 bar output	4918552TA	

REGULATORS | DIAL FLOW REGULATORS



4918501

PIN INDEX REGULATOR - THERAPY

- Oxygen regulator with Pin Index input
- Multiple flow therapy output set by a dial
- 1/2, 1, 2, 3, 4, 6, 8, 10 and 15 litres per minute

DESCRIPTION	PART No.	PRICE Ea.
O2 0.5-15.0 Lpm	4918501	
Air-4 0.5-15.0 Lpm	4918501A	



4918501B

BULLNOSE REGULATOR - THERAPY

- Oxygen regulator with Bullnose input
- Multiple flow therapy output 1/2, 1, 2, 3, 4, 6, 8, 10 and 15 litres per minute

DESCRIPTION	PART No.	PRICE Ea.
O2 0.5-15.0 Lpm	4918501B	
Air-4 0.5-15.0 Lpm	4918501BA	



4918551

PIN INDEX REGULATOR + SCHRADER - THERAPY

- Oxygen regulator with Pin Index input
- Single Schrader outlet
- Multiple flow therapy output 1/2, 1, 2, 3, 4, 6, 8, 10 and 15 litres per minute

DESCRIPTION	PART No.	PRICE Ea.
O2 0.5-15.0 Lpm	4918551	
Air-4 0.5-15.0 Lpm	4918551A	



4918551B

BULLNOSE REGULATOR + SCHRADER - THERAPY

- Oxygen regulator with Bullnose input
- Single Schrader outlet
- Multiple flow therapy output 1/2, 1, 2, 3, 4, 6, 8, 10 and 15 litres per minute

DESCRIPTION	PART No.	PRICE Ea.
O2 0.5-15.0 Lpm	4918551B	
Air-4 0.5-15.0 Lpm	498551BA	



4918551BT

BULLNOSE REGULATOR + TWIN SCHRADER - THERAPY

- Oxygen regulator with Bullnose input
- Twin Schrader outlet
- Multiple flow therapy output 1/2, 1, 2, 3, 4, 6, 8, 10 and 15 litres per minute

DESCRIPTION	PART No.	PRICE Ea.
O2 0.5-15.0 Lpm	4918551BT	
Air-4 0.5-15.0 Lpm	4918551BTA	



4918551T

PIN INDEX REGULATOR + TWIN SCHRADER - THERAPY

- Oxygen regulator with Pin Index input
- Twin Schrader outlet
- Multiple flow therapy output 1/2, 1, 2, 3, 4, 6, 8, 10 and 15 litres per minute

DESCRIPTION	PART No.	PRICE Ea.
O2 0.5-15.0 Lpm	4918551T	
Air-4 0.5-15.0 Lpm	4918551TA	

REGULATORS | DIAL REGULATORS MRI COMPATIBLE

MEC Dial Flow Regulators are non-magnetic and MRI compatible. Built to the same high standard as our Therapy range, the regulators comply with ISO 10524-1 and have a maximum flow capability of 25 litres per minute.

- Multiple flow therapy output set by a dial 1/2, 1, 2, 3, 4, 6, 8, 10, 15 and MAX 25 litres per minute
- Barbed, fir-tree style connector
- Complies with all current standards



4918501MRI

PIN INDEX REGULATOR + FLOWMETER

- Non-magnetic oxygen regulator with Pin Index input

DESCRIPTION	PART No.	PRICE Ea.
O2 0.5-25.0 Lpm	4918501MRI	



4918501BMRI

BULLNOSE REGULATOR + FLOWMETER

- Non-magnetic oxygen regulator with Bullnose input

DESCRIPTION	PART No.	PRICE Ea.
O2 0.5-25.0 Lpm	4918501BMRI	



4918501CGAMRI

USA TYPE REGULATOR + FLOWMETER

- Non-magnetic oxygen regulator with CGA-540 (USA) input

DESCRIPTION	PART No.	PRICE Ea.
O2 0.5-25.0 Lpm	4918501CGAMRI	

REGULATORS | TWO STAGE REGULATORS

The **MEC** range of Multi-Stage Medical Regulators are designed and manufactured to fully comply with ISO 10524-1 for cylinder use and ISO 10524-2 for manifold use.

- 200 bar maximum inlet pressure
- 0-10 bar delivery pressure

- 4/7 bar pre-set delivery pressure
- Maximum flow rate – 42m3/hr
- Cylinder and manifold variants available
- Bullnose or Pin Index inlet connections available
- Robust brass body construction for prolonged service life
- Serial number and replacement date clearly marked on rear of regulator



6070

TWO STAGE REGULATOR

3/8" BSP Outlet

DESCRIPTION	PART No.	PRICE Ea.
O2 Bullnose	6070	
Air-4 Bullnose	6071	
Air-7 Bullnose	6074	
N2O Nut + Stem	6073	
CO2 Nut + Stem	6075	



6050

TWO STAGE REGULATOR

3/8" BSP Outlet

DESCRIPTION	PART No.	PRICE Ea.
O2 Pin Index	6050	
Air-4 Pin Index	6051	
O2/N2O Pin Index	6052	
N2O Pin Index	6053	
Air-7 Pin Index	6054	



6070SH

TWO STAGE REGULATOR

Including Schrader

DESCRIPTION	PART No.	PRICE Ea.
O2 Bullnose	6070SH	
Air-4 Bullnose	6071SH	
Air-7 Bullnose	6071SH4	
N2O Nut + Stem	6071SH3	

REGULATORS | TWO STAGE REGULATORS



6050SH

TWO STAGE REGULATOR

Including Schrader

DESCRIPTION	PART No.	PRICE Ea.
O2 Pin Index	6050SH	
Air-4 Pin Index	6051SH	
O2/N2O Pin Index	6051SH2	
N2O Pin Index	6051SH3	
Air-7 Pin Index	6051SH4	



6070A

TWO STAGE ADJUSTABLE REGULATOR

3/8" BSP Outlet

DESCRIPTION	PART No.	PRICE Ea.
O2 Bullnose	6070A	
Air Bullnose	6071A	
N2O Nut + Stem	6073A	
CO2 Nut + Stem	6075A	



6050A

TWO STAGE ADJUSTABLE REGULATOR

3/8" BSP Outlet

DESCRIPTION	PART No.	PRICE Ea.
O2 Pin Index	6050A	
Air Pin Index	6051A	
O2/N2O Pin Index	6052A	
N2O Pin Index	6053A	
CO2 Pin Index	6079A	



6070F

TWO STAGE REGULATOR

Including Flowmeter - 0-15Lpm

DESCRIPTION	PART No.	PRICE Ea.
O2 Bullnose	6070F	
Air-4 Bullnose	6071F	
O2 Pin Index	6050F	
Air-4 Pin Index	6051F	



6070RA

TWO STAGE REGULATOR

Including Schrader - Right Angle

DESCRIPTION	PART No.	PRICE Ea.
O2 Bullnose	6070RA	
Air-4 Bullnose	6071RA	
O2 Pin Index	6050RA	
Air-4 Pin Index	6051RA	



6070SHA

TWO STAGE ADJUSTABLE REGULATOR

Including Schrader

DESCRIPTION	PART No.	PRICE Ea.
O2 Bullnose	6070SHA	
Air-4 Bullnose	6071SHA	
Air-7 Bullnose	6071SH4A	
N2O Nut + Stem	6071SH3A	

REGULATORS | TWO STAGE REGULATORS



6050SHA

TWO STAGE ADJUSTABLE REGULATOR

Including Schrader

DESCRIPTION	PART No.	PRICE Ea.
O2 Pin Index	6050SHA	
Air-4 Pin Index	6051SHA	
O2/N2O Pin Index	6051SH2A	
N2O Pin Index	6051SH3A	
Air-7 Pin Index	6051SH4A	



6070RAA

TWO STAGE ADJUSTABLE REGULATOR

Including Schrader - Right Angle

DESCRIPTION	PART No.	PRICE Ea.
O2 Bullnose	6070RAA	
Air-4 Bullnose	6071RAA	
O2 Pin Index	6050RAA	
Air-4 Pin Index	6051RAA	

MEC can provide a range of custom manufactured regulators with different inlet connections and output fittings.

REGULATORS | PRESSURE REDUCING REGULATORS



F161818



161818

PRESSURE REDUCING REGULATOR

- Supplied with gas specific Schrader
- British Standard gas specific Probe

DESCRIPTION	PART No.	PRICE Ea.
Adjustable Air-7 Bar to Zero Pressure Regulator	161818	
O2 Adjustable 8.5 Bar to Zero Pressure Regulator	161818/1	
N2O Adjustable 8.5 Bar to Zero Pressure Regulator	161818/3	
Air-7 Adjustable 8.5 Bar to Zero Pressure Regulator	161818/4	
Air-4 Adjustable 8.5 Bar to Zero Pressure Regulator	161818/5	
Fixed 7 Bar Input - 4 Bar Output Pressure Regulator	F161818	

SUCTION | SUCTION CONTROLLERS

High vacuum is suitable for use in operating theatres, intensive care units, trauma and casualty units, wards and any application where high vacuum is required. The suction controller enables the vacuum to be set at any level from 0 to full pipeline vacuum. The vacuum gauge is marked from 0 to -100 kPa and 0 to -760 mmHg. **Low vacuum** is suitable for paediatric applications or where a vacuum not exceeding -20kPa (-150 mmHg) is required. The vacuum gauge is marked 0 to -27 kPa and 0 to -203 mmHg. **Thoracic suction** is suitable for abdominal or pleural drainage or where a vacuum not exceeding -7kPa (-53 mmHg) is required. The vacuum gauge is marked 0 to -10 kPa and 0 to -75 mmHg. **Controllers** are supplied with BS probes. Alternative probe types are available, including DIN and ULA probes. Units with remote probes are supplied with 2 metres of vacuum hose. Vacuum controllers are supplied with a gauge (marked in kPa and mmHg), disposable hydrophobic filter that acts as a safety overflow valve, an On/Off switch and vacuum adjustment knob. Manufactured to ISO 10079-3.



FSR445-311215

SUCTION CONTROLLER

On Rail Clamp with Remote BS Probe

DESCRIPTION	PART No.	PRICE Ea.
High Suction	FSR425-311215	
Low Suction	FSR445-311215	
Thoracic Suction	FSR465-311215	



FSR425-311515

SUCTION CONTROLLER

On Direct BS Probe

DESCRIPTION	PART No.	PRICE Ea.
High Suction	FSR425-311515	
Low Suction	FSR445-311515	
Thoracic Suction	FSR465-311515	



FSR465-311715

SUCTION CONTROLLER

On Male 'V' Wedge with Remote BS Probe

DESCRIPTION	PART No.	PRICE Ea.
High Suction	FSR425-311715	
Low Suction	FSR445-311715	
Thoracic Suction	FSR465-311715	



- Suction Controller and Jar both mounted on a rail clamp
- 2m of Vacuum Hose with remote BS Vacuum probe
- 1500ml Autoclavable Polysulphone collection jar

FSP806-311215

PIPELINE SUCTION ON RAIL CLAMP

On Rail Clamp with Remote BS Probe

DESCRIPTION	PART No.	PRICE Ea.
High Suction	FSP806-311215	
Low Suction	FSP826-311215	
Thoracic Suction	FSP846-311215	



- Suction Controller on a Direct BS Probe
- Suction Jar mounted on a rail clamp
- 1500ml Autoclavable Polysulphone collection jar

FSP808-311215

PIPELINE SUCTION ON RAIL CLAMP + BS PROBE

With Direct BS Probe

DESCRIPTION	PART No.	PRICE Ea.
High Suction	FSP808-311215	
Low Suction	FSP828-311215	
Thoracic Suction	FSP848-311215	



- Suction Controller on a Direct BS Probe
- Suction Jar mounted on 'V' Wedge
- 1500ml Autoclavable Polysulphone collection jar

FSP808-311915

PIPELINE SUCTION ON 'V' WEDGE + BS PROBE

With Wall 'V' Plate + Direct BS Probe

DESCRIPTION	PART No.	PRICE Ea.
High Suction	FSP808-311915	
Low Suction	FSP828-311915	
Thoracic Suction	FSP848-311915	

SUCTION | SUCTION UNITS

Suction units are supplied with 2000ml autoclavable polysulfone collection jars, fitted with safety overflow valves. The suction units can be supplied with 1500ml litre collection jars. Alternative probe types are available.



- Suction Controller with Gauge
- Disposable Bacterial Filter
- Safety Overflow Valve
- Four Autoclavable Jars
- 2000ml capacity

FSP480-325115

MOBILE HIGH VACUUM SUCTION UNIT

DESCRIPTION	PART No.	PRICE Ea.
Mobile High Vacuum Suction Unit	FSP480-325115	



- Suction Controller with Gauge
- Disposable Bacterial Filter
- Safety Overflow Valve
- Two Autoclavable Jars
- 2000ml capacity

FSP400-325115

MOBILE HIGH VACUUM SUCTION UNIT

DESCRIPTION	PART No.	PRICE Ea.
Mobile High Vacuum Suction Unit	FSP400-325115	

SUCTION | INJECTOR SUCTION



FSR430-811510

INJECTOR SUCTION CONTROLLER

With BS Air Probes and Tubing

- High Vacuum injector suction controller
- Gauge marked in kPa and mmHg
- Available with either disposable bacterial filter or silencer
- Remote probes fitted with 2m of Air tubing

DESCRIPTION	PART No.	PRICE Ea.
Injector Suction Controller, Disposable Filter on Rail Clamp and Remote BS Air Probe	FSR430-811216	
Injector Suction Controller, Disposable Filter on Direct BS Air Probe	FSR430-811510	
Injector Suction Controller, Disposable Filter and Bullnose Connector (3/8" BSP Thread)	FSR430-811525	
Injector Suction Controller on Male 'V' Wedge, Disposable Filter and Remote BS Air Probe	FSR430-811716	

SUCTION | ELECTRIC SUCTION

Standard suction units are fitted with autoclavable polysulphone jar(s) –1800ml capacity + safety overflow valve. A disposable bacterial filter is fitted as standard (Hydrophobic filter can be fitted upon request). Alternative Jar and Liner systems are also available.



- Portable electric high vacuum suction unit, with one collection jar
- Maximum Vacuum: -83 kPa (623 mmHg)
- Suction Capacity: 26 l/min

FSE500-110019

PORTABLE ELECTRIC HIGH SUCTION

- 240V AC + Handle + Single Jar

DESCRIPTION	TYPE	PART No.	PRICE Ea.
Portable High Suction	Classic	FSE500-110019	
Portable High Suction	Premier	FSE500-111019	



- Portable electric high vacuum suction unit, with two collection jars
- Fitted with a change-over valve that enables the operator to switch from one jar to the other without interrupting suctioning
- Maximum Vacuum: -83 kPa (623 mmHg). Suction Capacity: 26 l/min

FSE550-111021

PORTABLE ELECTRIC HIGH SUCTION

- 240V AC + Handle + Two Jars

DESCRIPTION	TYPE	PART No.	PRICE Ea.
Portable High Suction	Classic	FSE550-110021	
Portable High Suction	Premier	FSE550-111021	



- Mobile electric high vacuum suction unit, mounted on a trolley
- Suitable for use in minor procedures
- Maximum Vacuum: -83 kPa (623 mmHg). Suction Capacity: 26 l/min

FSE570-120021

MOBILE HIGH SUCTION

- 240V AC + Handle + Two Jars

DESCRIPTION	TYPE	PART No.	PRICE Ea.
Portable High Suction	Classic	FSE570-120021	
Portable High Suction	Premier	FSE570-121021	



- Portable electric low vacuum suction unit, with one collection jar
- Suitable for abdominal and pleural drainage
- Maximum Vacuum: -20 kPa (150 mmHg). Suction Capacity: 4 l/min

FSE600-111033

PORTABLE ELECTRIC LOW SUCTION

- 240V AC + Handle + Single Jar

DESCRIPTION	TYPE	PART No.	PRICE Ea.
Portable Low Suction	Premier	FSE600-111033	

SUCTION | ELECTRIC SUCTION



- Portable electric low vacuum suction unit, with one collection jar
- Features continuous and intermittent suctioning and is suitable for abdominal and pleural drainage
- Maximum Vacuum: -20 kPa (150 mmHg). Suction Capacity: 4 l/min

FSE650-110033

PORTABLE INTERMITTENT LOW SUCTION

- 240V AC + Handle + Single Jar

DESCRIPTION	TYPE	PART No.	PRICE Ea.
Portable Low Suction	Classic	FSE650-110033	



- Portable emergency Battery/ Mains high vacuum suction unit, with one collection jar
- Can be operated from the built-in battery, a 240V AC or 12V DC source
- Maximum Vacuum: -80 kPa (600 mmHg). Suction Capacity: 26 l/min

FSE450-110013

12V/240V PORTABLE ELECTRIC HIGH SUCTION

- 12V DC/240V AC + Single Jar

DESCRIPTION	PART No.	PRICE Ea.
12V/240V High Suction	FSE450-110013	



FSE700-121027

MOBILE ELECTRIC HIGH VACUUM THEATRE SUCTION UNIT

With Two Collection Jars

DESCRIPTION	TYPE	PART No.	PRICE Ea.
Mobile Theatre Suction Unit	Classic	FSE700-120027	
Mobile Theatre Suction Unit	Premier	FSE700-121027	

- Mobile electric high vacuum suction unit with two lockable castors
- Suitable for use in the operating theatre
- Maximum Vacuum: -84 kPa (630 mmHg). Suction Capacity: 45 l/min

SUCTION | PORTABLE SUCTION



- Compact emergency foot operated suction unit
- One Autoclavable 1000ml collection jar and gauge (marked in kPa and mmHg)

FSF050-240000

COMPACT EMERGENCY FOOT/HAND OPERATED SUCTION UNIT

With One Autoclavable Collection Jar

DESCRIPTION	PART No.	PRICE Ea.
1Ltr Foot/Hand Suction	FSF050-240000	



- High performance emergency foot operated suction unit
- One Autoclavable 1500ml collection jar, gauge (marked in kPa and mmHg) and vacuum adjustment knob

FSF100-110000

HIGH PERFORMANCE EMERGENCY FOOT/HAND OPERATED SUCTION UNIT

With One Autoclavable Collection Jar

DESCRIPTION	PART No.	PRICE Ea.
1.5 Ltr Foot/Hand Suction	FSF100-110000	



EPS101A

- Electric suction unit
- One Autoclavable 1000ml collection jar and gauge (marked in kPa and mmHg)
- Runs on either 12-28V DC, 100 – 240V AC
- Running Time: 120 Minutes on Full Power, Over 11 Hours on low settings
- Vacuum: 0 to 0.8 bar / 0 to 600 mmHg
- Flow Rate: Up to 32 l/min

SAM E.P.S. PORTABLE SUCTION UNIT

With One Autoclavable Collection Jar and Spare Carrier

DESCRIPTION	PART No.	PRICE Ea.
SAM Portable Suction Unit with Autoclavable Jar	EPS101A	
SAM Portable Suction Unit with Serres Jar	EPS101S	
SAM Portable Suction Unit with VaxSax Jar	EPS101V	
SAM Portable Suction Unit with Serres Jar Neonatal	EPS101N	

- Rotating Bottle
- Unit can be used upright or flat
- Spare Carrier for larger, non-standard Jars
- On-board LED Lighting
- Comes with: Power Cable, Internal Charger, 1m Patient Tubing



EPS107

SAM E.P.S. PORTABLE SUCTION UNIT ACCESSORIES: SAM E.P.S. PORTABLE SUCTION UNIT SOFT CASE

DESCRIPTION	PART No.	PRICE Ea.
SAM Suction Unit Soft Case	EPS107	

- Allows full use of the Unit without removal
- Can be used with optional Carry Strap
- Durable and lightweight design



EPS108

SAM E.P.S. PORTABLE SUCTION UNIT CARRY STRAP

- 12V DC/240V AC + Single Jar

DESCRIPTION	PART No.	PRICE Ea.
SAM Suction Unit Carry Strap	EPS108	

- Easily clips to sides of Unit with, or without Soft Case fitted



EPS105

SAM E.P.S. PORTABLE SUCTION UNIT 12V CHARGING PLATE

DESCRIPTION	PART No.	PRICE Ea.
SAM Portable Suction Unit Charging Plate 12/24V	EPS105	
SAM Portable Suction Unit Charging Plate 100/240V	EPS106	

- Wall Mounting Plate with 12v charging plug
- Unit easily clips onto Plate with or without Soft Case fitted



116192AMB

ASSEMBLED - SINGLE

Terminal Units with Smoothflow Profiled Boxes

- Gas specific sockets with non-interchangeability
- Supplied with up to 7m of Hose and BS gas specific probe
- Complete with pipe clips and fixing screws
- First and Second Fix supplied
- Fully compliant with ISO 9170-1

GAS	PART No.	PRICE Ea.
O2	116191AMB	
O2/N2O	116192AMB	
N2O	116193AMB	
Air-7	116194AMB	
Air-4	116195AMB	
Vacuum	116196AMB	



116201AMB

ASSEMBLED - TWIN

Terminal Units with Smoothflow Profiled Boxes

- Twin Gas specific sockets with non-interchangeability
- Supplied with up to 7m of Hose and BS gas specific probe
- Complete with pipe clips and fixing screws
- First and Second Fix supplied
- Fully compliant with ISO 9170-1

GAS	PART No.	PRICE Ea.
O2	116201AMB	
O2/N2O	116202AMB	
N2O	116203AMB	
Air-7	116204AMB	
Air-4	116205AMB	
Vacuum	116206AMB	



116191AN

ASSEMBLED - SINGLE

Smoothflow Terminal Units

- Gas specific sockets with non-interchangeability
- Supplied with up to 7m of Hose and BS gas specific probe
- Complete with pipe clips and fixing screws
- First and Second Fix supplied
- Fully compliant with ISO 9170-1

GAS	PART No.	PRICE Ea.
O2	116191AN	
O2/N2O	116192AN	
N2O	116193AN	
Air-7	116194AN	
Air-4	116195AN	
Vacuum	116196AN	



116201AN

ASSEMBLED - TWIN

Smoothflow Terminal Units

- Twin Gas specific sockets with non-interchangeability
- Supplied with up to 7m of Hose and BS gas specific probe
- Complete with pipe clips and fixing screws
- First and Second Fix supplied
- Fully compliant with ISO 9170-1

GAS	PART No.	PRICE Ea.
O2	116201AN	
O2/N2O	116202AN	
N2O	116203AN	
Air-7	116204AN	
Air-4	116205AN	
Vacuum	116206AN	



202230/2TN

ORB SMOOTHFLOW AMBULANCE TERMINAL UNIT (SQUARE STYLE)

- Gas specific sockets with non-interchangeability
- First Fix supplied with Hose Tail
- Complete with fixing screws to secure both First Fix and Box to base plate
- First and Second Fix supplied

GAS	PART No.	PRICE Ea.
O2	202230TN	
O2/N2O	202230/2TN	
N2O	202230/3TN	
Air-7	202230/4TN	
Air-4	202230/5TN	
Vacuum	202230/6TN	



202230AMB

ORB SMOOTHFLOW AMBULANCE TERMINAL UNIT (PROFILED STYLE)

- Gas specific sockets with non-interchangeability
- First Fix supplied with Hose Tail
- Complete with fixing screws to secure both First Fix and Box to base plate
- First and Second Fix supplied

GAS	PART No.	PRICE Ea.
O2	202230AMB	
O2/N2O	2022302AMB	
N2O	2022303AMB	
Air-7	2022304AMB	
Air-4	2022305AMB	
Vacuum	2022306AMB	



202230/6NN

ORB SMOOTHFLOW AMBULANCE TERMINAL UNIT

With Female NIST

- Gas specific sockets with non-interchangeability
- First Fix supplied with gas specific Female NIST
- Complete with fixing screws to secure both First Fix and Box to base plate
- First and Second Fix supplied

GAS	PART No.	PRICE Ea.
O2	202230NN	
O2/N2O	202230/2NN	
N2O	202230/3NN	
Air-7	202230/4NN	
Air-4	202230/5NN	
Vacuum	202230/6NN	



202230RAN

ORB SMOOTHFLOW AMBULANCE TERMINAL UNIT

With 90° Hose Tail Fitting

- Gas specific sockets with non-interchangeability
- First Fix supplied with Hose Tail
- Complete with fixing screws to secure both First Fix and Box to base plate
- First and Second Fix supplied

GAS	PART No.	PRICE Ea.
O2	202230RAN	
O2/N2O	202230/2RAN	
N2O	202230/3RAN	
Air-7	202230/4RAN	
Air-4	202230/5RAN	
Vacuum	202230/6RAN	

AMBULANCE | LOW PRESSURE WARNING PANEL



LPWP1

LPWP SERIES – LOW PRESSURE WARNING PANEL

A warning system for use with two cylinders or single cylinder supply system. Designed to warn users of a drop in supply line pressure, alerting users to check the supply cylinder and switch to a new supply.

- Warning panel for when pipeline pressure is low
- Flush mounted fire retardant anti-microbial case
- Loud audible warning with LED indicator
- Separate mute button
- To be used with COVP manual change over unit or LPWB Low Pressure Warning Block
- Interface with vehicle information systems

DESCRIPTION	PART No.	PRICE Ea.
O2	LPWP1	
O2/N2O	LPWP2	
Air-4	LPWP5	

LPWPSU - LOW PRESSURE WARNING PANEL SURFACE MOUNTED

- Mains powered

DESCRIPTION	PART No.	PRICE Ea.
O2	LPWP1SU	
O2/N2O	LPWP2SU	
Air-4	LPWP5SU	

LPWB - LOW PRESSURE WARNING BLOCK

- To be used with LPWP warning panel
- Including sensor

DESCRIPTION	PART No.	PRICE Ea.
All gases	LPWB	



LPWGTB

- Warning gauge for when pipeline pressure is low
- Fire retardant anti-microbial case
- 0-11 Bar Pressure Gauge
- Hose Tail and NIST connections available

LPWG SERIES – LOW PRESSURE WARNING GAUGE

DESCRIPTION	PART No.	PRICE Ea.
Tail – Bottom Entry	LPWGTB	
Tail – Top Entry	LPWGTT	
Tail – Left Entry	LPWGTL	
Tail – Right Entry	LPWGTR	
Tail – Rear Entry	LPWGTRR	
O2 NIST – Rear Entry	LPWG1NRR	
O2/N2O NIST – Rear Entry	LPWG2NRR	
Air-4 NIST – Rear Entry	LPWG5NRR	

AMBULANCE | CHANGE OVER UNITS



COVREGPI1

COVC SERIES – REGULATORS WITH PRESSURE SENSORS

- Regulator with integrated Pressure Sensor
- 0-200 Bar

DESCRIPTION	PART No.	PRICE Ea.
O2 Bullnose	COVREGBN1	
Air-4 Bullnose	COVREGBN5	
O2 Pin Index	COVREGPI1	
O2/N2O Pin Index	COVREGPI2	
Air-4 Pin Index	COVREGPI5	
N2O Pin Index	COVREGPI3	

Other cylinder connections available



COVM1ST

- Manual change over between two cylinders
- Separate off position
- Fire retardant anti-microbial case and knob
- 0-11 Bar Pressure Gauge
- Choice of surface or rear entry gas connections

COVM SERIES MANUAL CHANGE OVER VALVE

DESCRIPTION	PART No.	PRICE Ea.
O2 Surface Entry Hose Tails	COVM1ST	
O2/N2O Surface Entry Hose Tails	COVM2ST	
N2O Surface Entry Hose Tails	COVM3ST	
Air-4 Surface Entry Hose Tails	COVM5ST	
O2 Surface Entry NIST	COVM1SN	
O2/N2O Surface Entry NIST	COVM2SN	
N2O Surface Entry NIST	COVM3SN	
Air-4 Surface Entry NIST	COVM5SN	
O2 Surface Entry DISS	COVM1SD	
Air Surface Entry DISS	COVM5SD	

DESCRIPTION	PART No.	PRICE Ea.
O2 Rear Entry Hose Tails	COVM1RT	
O2/N2O Rear Entry Hose Tails	COVM2RT	
N2O Rear Entry Hose Tails	COVM3RT	
Air-4 Rear Entry Hose Tails	COVM5RT	
O2 Rear Entry NIST	COVM1RN	
O2/N2O Rear Entry NIST	COVM2RN	
N2O Rear Entry NIST	COVM3RN	
Air-4 Rear Entry NIST	COVM5RN	
O2 Rear Entry DISS	COVM1RD	
Air Rear Entry DISS	COVM5RD	



COVP1ST

- Manual change over between two cylinders
- Separate off position
- Fire retardant anti-microbial case and knob
- 0-11 Bar Pressure Gauge
- Choice of surface or rear entry gas connections
- To be used with Low Pressure Warning Panel

COVP SERIES MANUAL CHANGE OVER VALVE – WITH PRESSURE SENSOR

DESCRIPTION	PART No.	PRICE Ea.
O2 Surface Entry Hose Tails	COVP1ST	
O2/N2O Surface Entry Hose Tails	COVP2ST	
N2O Surface Entry Hose Tails	COVP3ST	
Air-4 Surface Entry Hose Tails	COVP5ST	
O2 Surface Entry NIST	COVP1SN	
O2/N2O Surface Entry NIST	COVP2SN	
N2O Surface Entry NIST	COVP3SN	
Air-4 Surface Entry NIST	COVP5SN	
O2 Surface Entry DISS	COVP1SD	
Air Surface Entry DISS	COVP5SD	

DESCRIPTION	PART No.	PRICE Ea.
O2 Rear Entry Hose Tails	COVP1RT	
O2/N2O Rear Entry Hose Tails	COVP2RT	
N2O Rear Entry Hose Tails	COVP3ST	
Air-4 Rear Entry Hose Tails	COVP5RT	
O2 Rear Entry NIST	COVP1RN	
O2/N2O Rear Entry NIST	COVP2RN	
N2O Rear Entry NIST	COVP3SN	
Air-4 Rear Entry NIST	COVP5RN	
O2 Rear Entry DISS	COVP1RD	
Air Rear Entry DISS	COVP5RD	

AMBULANCE | CHANGE OVER UNITS



COVA1ST

For automatic switching between two gas cylinders to maximise use of gas contents in a safe and controlled way.

- Automatic switching between two cylinders with integral or detachable cylinder regulators
- Clear display showing pipeline pressure
- Manual override switches to select cylinder
- Fire retardant anti-microbial case
- Loud audible warning with LED indicator
- Separate mute button
- Interface with vehicle information systems

COVA SERIES – AUTOMATIC CHANGE OVER VALVE

DESCRIPTION	PART No.	PRICE Ea.
O2 Surface Entry Hose Tails	COVA1ST	
O2/N2O Surface Entry Hose Tails	COVA2ST	
N2O Surface Entry Hose Tails	COVA3ST	
Air-4 Surface Entry Hose Tails	COVA5ST	
O2 Surface Entry NIST	COVA1SN	
O2/N2O Surface Entry NIST	COVA2SN	
N2O Surface Entry NIST	COVA3SN	
Air-4 Surface Entry NIST	COVA5SN	
O2 Surface Entry DISS	COVA1SD	
Air Surface Entry DISS	COVA5SD	

DESCRIPTION	PART No.	PRICE Ea.
O2 Rear Entry Hose Tails	COVA1RT	
O2/N2O Rear Entry Hose Tails	COVA2RT	
N2O Rear Entry Hose Tails	COVA3RT	
Air-4 Rear Entry Hose Tails	COVA5RT	
O2 Rear Entry NIST	COVA1RN	
O2/N2O Rear Entry NIST	COVA2RN	
N2O Rear Entry NIST	COVA3RN	
Air-4 Rear Entry NIST	COVA5RN	
O2 Rear Entry DISS	COVA1RD	
Air Rear Entry DISS	COVA5RD	

COVA SERIES – MAINS POWERED

DESCRIPTION	PART No.	PRICE Ea.
O2 Surface Entry Hose Tails	COVA1STM	
O2/N2O Surface Entry Hose Tails	COVA2STM	
N2O Surface Entry Hose Tails	COVA3STM	
Air-4 Surface Entry Hose Tails	COVA5STM	
O2 Surface Entry NIST	COVA1SNM	
O2/N2O Surface Entry NIST	COVA2SNM	
N2O Surface Entry NIST	COVA3SNM	
Air-4 Surface Entry NIST	COVA5SNM	
O2 Surface Entry DISS	COVA1SDM	
Air Surface Entry DISS	COVA5SDM	



COVA1RP

- To be used with COVA Automatic Change Over Valve
- Flush mounted fire retardant anti-microbial case
- Duplicates information of the main unit through a wired connection
- Can be located in the patient compartment so is clear and visible

COVA SERIES – AUTOMATIC CHANGE OVER VALVE REMOTE PANEL

DESCRIPTION	PART No.	PRICE Ea.
O2 Remote Panel	COVA1RP	
O2/N2O Remote Panel	COVA2RP	
N2O Remote Panel	COVA3RP	
Air-4 Remote Panel	COVA5RP	

COVA SERIES – SURFACE MOUNTED

DESCRIPTION	PART No.	PRICE Ea.
O2 Surface Mount	COVA1RPSU	
O2/N2O Surface Mount	COVA2RPSU	
N2O Surface Mount	COVA3RPSU	
Air-4 Surface Mount	COVA5RPSU	



COVC1ST

For automatic switching between two gas cylinders, using cylinder pressure to maximise the use of gas contents in a safe and controlled way.

- Automatic switching between two cylinders fitted with detachable MEC regulators
- Clear display showing pipeline pressure and cylinder pressure
- Bar graph to indicate cylinder level
- Manual override switches to select cylinder
- Fire retardant anti-microbial case
- Loud audible warning with LED indicator
- Separate mute button
- MEC COVC regulators required
- Interface with vehicle information systems

COVC SERIES – AUTOMATIC CHANGE OVER VALVE

DESCRIPTION	PART No.	PRICE Ea.
O2 Surface Entry Hose Tails	COVC1ST	
O2/N2O Surface Entry Hose Tails	COVC2ST	
N2O Surface Entry Hose Tails	COVC3ST	
Air-4 Surface Entry Hose Tails	COVC5ST	
O2 Surface Entry NIST	COVC1SN	
O2/N2O Surface Entry NIST	COVC2SN	
N2O Surface Entry NIST	COVC3SN	
Air-4 Surface Entry NIST	COVC5SN	
O2 Surface Entry DISS	COVC1SD	
Air Surface Entry DISS	COVC5SD	

DESCRIPTION	PART No.	PRICE Ea.
O2 Rear Entry Hose Tails	COVC1RT	
O2/N2O Rear Entry Hose Tails	COVC2RT	
N2O Rear Entry Hose Tails	COVC3RT	
Air-4 Rear Entry Hose Tails	COVC5RT	
O2 Rear Entry NIST	COVC1RN	
O2/N2O Rear Entry NIST	COVC2RN	
N2O Rear Entry NIST	COVC3RN	
Air-4 Rear Entry NIST	COVC5RN	
O2 Rear Entry DISS	COVC1RD	
Air Rear Entry DISS	COVC5RD	

COVC SERIES- MAINS POWERED

DESCRIPTION	PART No.	PRICE Ea.
O2 Surface Entry Hose Tails	COVC1STM	
O2/N2O Surface Entry Hose Tails	COVC2STM	
N2O Surface Entry Hose Tails	COVC3STM	
Air-4 Surface Entry Hose Tails	COVC5STM	
O2 Surface Entry NIST	COVC1SNM	
O2/N2O Surface Entry NIST	COVC2SNM	
N2O Surface Entry NIST	COVC3SNM	
Air-4 Surface Entry NIST	COVC5SNM	
O2 Surface Entry DISS	COVC1SDM	
Air Surface Entry DISS	COVC5SDM	



COVC1RP

- To be used with COVC Automatic Change Over Valve
- Flush mounted fire retardant anti-microbial case
- Duplicates information of the main unit through a wired connection
- Can be located in the patient compartment so is clear and visible

COVC SERIES – AUTOMATIC CHANGE OVER VALVE REMOTE PANEL

DESCRIPTION	PART No.	PRICE Ea.
O2 Remote Panel	COVC1RP	
O2/N2O Remote Panel	COVC2RP	
N2O Remote Panel	COVA3RP	
Air-4 Remote Panel	COVC5RP	

COVC SERIES – SURFACE MOUNTED

DESCRIPTION	PART No.	PRICE Ea.
O2 Surface Mount	COVC1RPSU	
O2/N2O Surface Mount	COVC2RPSU	
N2O Surface Mount	COVC3RPSU	
Air-4 Surface Mount	COVC5RPSU	

CHANGE OVER UNITS



COVS1N



COVA3SNMWT

MEC CHANGE OVER VALVE SWITCH

To allow the switching between two input supplies without interruption of the delivery of medical gas to the connected medical device. Automatically switch to a cylinder supply when a patient is being transported and the piped medical gas supply is temporarily not available. The device will default to the stationery source of piped medical gas and only switch to the cylinder source when the stationery source is unavailable.

DESCRIPTION	PART No.	PRICE Ea.
O2 Gas Change Over Valve NIST	COVS1N	
Air-4 Gas Change Over Valve NIST	COVS5N	
O2 Gas Change Over Valve Hose Tails	COVS1T	
Air-4 Gas Change Over Valve Hose Tails	COVS5T	
O2 Gas Change Over Valve DISS	COVS1D	
Air-4 Gas Change Over Valve DISS	COVS5D	

With Rail Clamp

DESCRIPTION	PART No.	PRICE Ea.
O2 Gas Change Over Valve NIST With Rail Clamp	COVS1NR	
Air-4 Gas Change Over Valve NIST With Rail Clamp	COVS5NR	
O2 Gas Change Over Valve Hose Tails With Rail Clamp	COVS1TR	
Air-4 Gas Change Over Valve Hose Tails With Rail Clamp	COVS5TR	
O2 Gas Change Over Valve DISS with Rail Clamp	COVS1DR	
Air-4 Gas Change Over Valve DISS With Rail Clamp	COVS5DR	

With Rail V Wedge

DESCRIPTION	PART No.	PRICE Ea.
O2 Gas Change Over Valve NIST With Male V Wedge	COVS1NV	
Air-4 Gas Change Over Valve NIST With Male V Wedge	COVS5NV	
O2 Gas Change Over Valve Hose Tails With Male V Wedge	COVS1TV	
Air-4 Gas Change Over Valve Hose Tails With Male V Wedge	COVS5TV	
O2 Gas Change Over Valve DISS With Male V Wedge	COVS1DV	
Air-4 Gas Change Over Valve DISS With Male V Wedge	COVS5DV	

COVM SERIES MANUAL CHANGE OVER VALVE MOBILE SUPPORT SYSTEM

Surface Entry Nist complete with Transport Trolley, E Size Cylinder Cradles, Storage Basket and Handle.

DESCRIPTION	PART No.	PRICE Ea.
O2 Surface Entry NIST	COVM1SNWT	
N2O Surface Entry NIST	COVM3SNWT	
AIR-4 Surface Entry NIST	COVM5SNWT	

COVA SERIES AUTOMATIC CHANGE OVER VALVE MOBILE SUPPORT SYSTEM

Surface Entry Nist complete with Transport Trolley, E Size Cylinder Cradles, Storage Basket and Handle - Mains Powered.

DESCRIPTION	PART No.	PRICE Ea.
O2 Surface Entry NIST	COVA1SNMWT	
N2O Surface Entry NIST	COVA3SNMWT	
AIR-4 Surface Entry NIST	COVA5SNMWT	

COVC SERIES AUTOMATIC CHANGE OVER VALVE MOBILE SUPPORT SYSTEM

Surface Entry Nist complete with Transport Trolley, E Size Cylinder Cradles, Storage Basket and Handle - Mains Powered.

DESCRIPTION	PART No.	PRICE Ea.
O2 Surface Entry NIST	COVC1SNMWT	
N2O Surface Entry NIST	COVC3SNMWT	
AIR-4 Surface Entry NIST	COVC5SNMWT	

DEMAND VALVES

- On demand Oxygen or 50/50 Nitrous Oxide/Oxygen (Entonox®) system
- Practical features to avoid cross contamination which provides a good patient experience
- Full length handle
- 2-4m hose with BS Schrader probe
- Can be used with generic filter systems



4961280

ENTONOX DEMAND VALVE

DESCRIPTION	PART No.	PRICE Ea.
Entonox® Demand Valve (2M Hose)	4961280	
Entonox® Demand Valve (3M Hose)	4961281	
Entonox® Demand Valve (4M Hose)	4961282	

- Can be supplied with either a dedicated pressure regulator (as shown) or with any international hose fitting to use with your own cylinder or wall supply
- 5 Year Warranty
- 5 Year Service Interval
- 10 Year Intended Life-span
- Fully compliant with BS 4272-2



4961283

ENTONOX DEMAND VALVE WITH INTEGRAL REGULATOR

DESCRIPTION	PART No.	PRICE Ea.
Entonox® Demand Valve with Integral Regulator (2M Hose)	4961283	



4961284

OXYGEN DEMAND VALVE

DESCRIPTION	PART No.	PRICE Ea.
Oxygen Demand Valve (2M Hose)	4961284	
Oxygen Demand Valve (3M Hose)	4961285	
Oxygen Demand Valve (4M Hose)	4961286	



4961287

OXYGEN DEMAND VALVE WITH INTEGRAL REGULATOR

DESCRIPTION	PART No.	PRICE Ea.
Oxygen Demand Valve with Integral Regulator (2M Hose)	4961287	

DESCRIPTION	PART No.	PRICE Ea.
AGSS Scavenging Adaptor	4961288	

GAS SPECIFIC SCHRADER | ADAPTORS

MEC provides a full range of Gas Specific Schrader adaptors for a permanent connection when it is required. Schrader adaptors have a non-interchangeability function and are available with a variety of thread and angled adaptors. Manufactured to ISO 9170-1.

- Gas specific connection with non-interchangeability
- Lightweight construction
- Designed for use with British Standard Probe connectors



19223

SINGLE ADAPTOR

1/4" BSPT Thread (Male)

GAS	PART No.	PRICE Ea.
O2	19221	
O2/N2O	19222	
N2O	19223	
Air-7	19224	
Air-4	19225	
Vacuum	19226	



19326

SINGLE ADAPTOR

1/8" BSPT Thread (Male)

GAS	PART No.	PRICE Ea.
O2	19321	
O2/N2O	19322	
N2O	19323	
Air-7	19324	
Air-4	19325	
Vacuum	19326	



19225SP

SINGLE ADAPTOR

1/4" BSPT Thread (Female)

GAS	PART No.	PRICE Ea.
O2	19221SP	
O2/N2O	19222SP	
N2O	19223SP	
Air-7	19224SP	
Air-4	19225SP	
Vacuum	19226SP	



202291/2

RIGHT ANGLED ADAPTOR

3/8" BSP Nut + Liner

GAS	PART No.	PRICE Ea.
O2	202291	
O2/N2O	202291/2	
N2O	202291/3	
Air-7	202291/4	
Air-4	202291/5	
Vacuum	202291/6	



191412/1

STRAIGHT ADAPTOR

3/8" BSP Nut + Liner

GAS	PART No.	PRICE Ea.
O2	191412/1	
O2/N2O	191412/2	
N2O	191412/3	
Air-7	191412/4	
Air-4	191412/5	
Vacuum	191412/6	



202316

TWO WAY ADAPTOR

3/8" BSP Nut + Liner - 3/8" BSP Male

GAS	PART No.	PRICE Ea.
O2	202311	
O2/N2O	202312	
N2O	202313	
Air-7	202314	
Air-4	202315	
Vacuum	202316	

GAS SPECIFIC SCHRADER | ADAPTORS



19224TL

SINGLE ADAPTOR AND HOSE TAIL

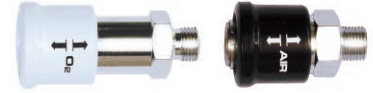
GAS	PART No.	PRICE Ea.
O2	19221TL	
O2/N2O	19222TL	
N2O	19223TL	
Air-7	19224TL	
Air-4	19225TL	
Vacuum	19226TL	



191412/1DS

STRAIGHT ADAPTOR DISS

GAS	PART No.	PRICE Ea.
O2 Straight Adaptor N&L Diss	191412/1DS	



3204987

3204988

MINI SCHRADER

1/8" BSP (Male) Coupling

GAS	PART No.	PRICE Ea.
O2	3204987	
Air-4	3204988	

MEC provides a full range of medical gas connectors with custom options available. We also stock international couplings.



1922TL1/8

1922TL1/8F

SCHRADER HOSE TAIL

1/8" Male + Female Coupling

THREAD	PART No.	PRICE Ea.
Male	1922TL1/8	
Female	1922TL1/8F	



10700002T

1070000T5

REMOTE MINI SCHRADER PROBE

GAS	PART No.	PRICE Ea.
O2	10700002T	
Air	1070000T5	



3204985

MINI SCHRADER ADAPTOR

+ BS Probe

GAS	PART No.	PRICE Ea.
O2	3204981	
Air-4	3204985	

GAS SPECIFIC SCHRADER | ADAPTORS

- Gas specific connection with non-interchangeability
- Lightweight construction
- Designed for use with British Standard Probe connectors



201904S

STRAIGHT BAR TWIN ADAPTOR

50mm Back Bar - 3/8" BSP Nut + Liner

GAS	PART No.	PRICE Ea.
O2	201901S	
O2/N2O	201902S	
N2O	201903S	
Air-7	201904S	
Air-4	201905S	
Vacuum	201906S	



201902B

STRAIGHT BAR TWIN ADAPTOR

50mm Back Bar - With BS Probe

GAS	PART No.	PRICE Ea.
O2	201901B	
O2/N2O	201902B	
N2O	201903B	
Air-7	201904B	
Air-4	201905B	
Vacuum	201906B	



201901NB

STRAIGHT BAR TWIN ADAPTOR

50mm Back Bar - NIST

GAS	PART No.	PRICE Ea.
O2	201901NB	
O2/N2O	201902NB	
N2O	201903NB	
Air-7	201904NB	
Air-4	201905NB	
Vacuum	201906NB	



201906SL

STRAIGHT BAR TWIN ADAPTOR

100mm Back Bar - 3/8" BSP Nut + Liner

GAS	PART No.	PRICE Ea.
O2	201901SL	
O2/N2O	201902SL	
N2O	201903SL	
Air-7	201904SL	
Air-4	201905SL	
Vacuum	201906SL	

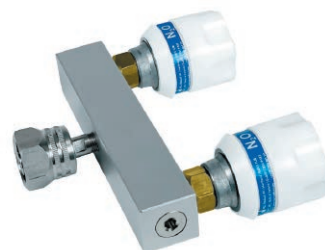


201903BL

STRAIGHT BAR TWIN ADAPTOR

100mm Back Bar - With BS Probe

GAS	PART No.	PRICE Ea.
O2	201901BL	
O2/N2O	201902BL	
N2O	201903BL	
Air-7	201904BL	
Air-4	201905BL	
Vacuum	201906BL	



201903NBL

STRAIGHT BAR TWIN ADAPTOR

100mm Back Bar - NIST

GAS	PART No.	PRICE Ea.
O2	201901NBL	
O2/N2O	201902NBL	
N2O	201903NBL	
Air-7	201904NBL	
Air-4	201905NBL	
Vacuum	201906NBL	

GAS SPECIFIC SCHRADER | ADAPTORS



201903

TWIN ADAPTOR

Nut + Liner 3/8" BSP

GAS	PART No.	PRICE Ea.
O2	201901	
O2/N2O	201902	
N2O	201903	
Air-7	201904	
Air-4	201905	
Vacuum	201906	



201906P

TWIN ADAPTOR + BS PROBE

GAS	PART No.	PRICE Ea.
O2	201901P	
O2/N2O	201902P	
N2O	201903P	
Air-7	201904P	
Air-4	201905P	
Vacuum	201906P	



201901N

TWIN ADAPTOR + NIST

GAS	PART No.	PRICE Ea.
O2	201901N	
O2/N2O	201902N	
N2O	201903N	
Air-7	201904N	
Air-4	201905N	
Vacuum	201906N	



3210281

SINGLE ADAPTOR, MINI SCHRADER ADAPTOR

+ BS Probe

- Designed for use with British Standard / Mini Schrader Probe connectors

GAS	PART No.	PRICE Ea.
O2	3210281	
Air-4	3210285	



3204991

TWIN MINI SCHRADER ADAPTOR

+ BS Probe

- Designed for use with Mini Schrader Probe connectors

GAS	PART No.	PRICE Ea.
O2	3204991	
Air-4	3204995	



322100

O2 MINI SCHRADER

To Male plus Female NIST

- Designed for use with British Standard NIST connectors

GAS	PART No.	PRICE Ea.
O2	322100	



Z0001/DIS/001

IN LINE DRAIN TRAP ASSEMBLY

With Filter

GAS	PART No.	PRICE Ea.
O2 DISS	Z0001/DIS/001	
Air DISS	Z0005/DIS/001	
O2 NIST	Z0001/NIST/001	
Air-4 NIST	Z0005/NIST/001	

PENDANTS | TERMINAL UNITS

The **MEC** Pendant Units are designed to fully comply with the requirements of ISO 9170-1. Features integral to the units include: non-interchangeability between probes, socket assembly terminal blocks, as well as quick release of the probe with single handed operation. The Pendants incorporate a secondary valve which facilitates ease of maintenance without interruption of the gas supply to the unit.



- 1m coloured gas specific anti-static hose
- British Standard NIST Probe + Nut
- British Standard gas specific pendant head
- (MRI version available, not as standard)
- Phthalate free
- Anti-Microbial

N68161H

PENDANT TERMINAL UNIT

+ 1m Hose Assembly

DESCRIPTION	PART No.	PRICE Ea.
O2	N68161H	
O2/N2O	N68162H	
N2O	N68163H	
Air-7	N68164H	
Air-4	N68165H	
Vacuum	N68166H	
AGSS	N231720H	

Alternative hose length may be specified at time of order



- British Standard gas specific pendant head
- (MRI version available, not as standard)

N68161

PENDANT TERMINAL UNIT

DESCRIPTION	PART No.	PRICE Ea.
O2	N68161	
O2/N2O	N68162	
N2O	N68163	
Air-7	N68164	
Air-4	N68165	
Vacuum	N68166	
AGSS	N231720	



163635

CEILING ROSE PENDANT

- A combination of up to seven gases (six plus AGSS)
- Installation allowing complete flexibility
- 1m coloured gas specific anti-static hose
- (MRI version available, not as standard)
- Phthalate free
- Anti-Microbial

DESCRIPTION	PART No.	PRICE Ea.
One Gas	163631	
Two Gas	163632	
Three Gas	163633	
Four Gas	163634	
Five Gas	163635	
Six Gas	163636	
Seven Gas	163637	

Gas and hose length to be specified



(includes cover, not shown)

FPH6

PENDANT HOSE ASSEMBLY

1m

- 1m coloured gas specific anti-static hose
- British NIST Nut + NIST Probe Assembly
- British Standard gas specific female NIST
- MRI compatible
- Phthalate free
- Anti-Microbial

DESCRIPTION	PART No.	PRICE Ea.
O2	FPH1	
O2/N2O	FPH2	
N2O	FPH3	
Air-7	FPH4	
Air-4	FPH5	
Vacuum	FPH6	
AGSS	FPHAGSS	

Alternative hose length may be specified at time of order

FOR RE-HOSING WITH MEC PENDANT ONLY:

AGSS	231720HA
------	----------

PENDANTS | SPLITTER UNIT



1920211N

PENDANT SPLITTER UNIT

DESCRIPTION	PART No.	PRICE Ea.
O2	1920211N	
O2/N2O	1920212N	
N2O	1920213N	

- Twin gas specific outlet points with Direct probe
- Mainly designed to be plugged into pendants
- Fully conforming with the requirements of European Standards ISO 9170-1



1920230

AGSS SPLITTER UNIT

- Twin AGSS outlet points with probe

DESCRIPTION	PART No.	PRICE Ea.
AGSS	1920230	

ANAESTHETIC GAS SCAVENGING SYSTEMS

The AGSS is designed to conform to ISO 80601-2-13 and is used for the extraction of waste and excess gases, from the patient breathing system into the central anaesthetic gas scavenging disposal system. This is a device that safely collects and removes exhaled nitrous oxide and other anaesthetic gases during the administration of anaesthesia or sedation. The device is recommended by: AAGBI to avoid occupational exposure to the gases.



12800001P

AGSS RECEIVING SYSTEMS

DESCRIPTION	PART No.	PRICE Ea.
Receiving System inc. 3m Disposal Hose	12800001P	
Receiving System inc. 4m Disposal Hose	12800004	
Receiving System inc. 5m Disposal Hose	12800000	

- Conforms to current British Standard
- MRI compatible
- Wall, Rail or Machine mounted
- Weighs 1Kg, size 80mm X 390mm
- Supplied with Disposal and Transfer Hoses
- Both Disposal Hose and Patient Inlet port swivel about 360° to ensure hose positioning and prevent occlusion
- 3m, 4m or 5m Disposal Hose
- 2.4m Transfer Hose
- Complete with Pressure Relief Valve

Annual Service and Pre-planned Maintenance Contracts Available

PURAIR SCAVENGING SYSTEMS

MEC provides a range of Gas Stand Alone Scavenging Systems for a variety of applications. Each system differs in its extraction rate with flow capacity matched to the needs of a specific environment.



- Cost effective method of Anaesthetic Gas Scavenging without the need for remote pipework
- Simple to install and factory set flow rates, so no commissioning is required
- Extraction capacity is 130 litres/min
- Conforms to ISO 80601-2-13 and is used for the extraction of waste and excess gases

132200

PURAIR 130

DESCRIPTION	PART No.	PRICE Ea.
Purair 130 AGSS Kit	132200	



- Designed specifically for maternity delivery suites where the patient is self-administered analgesia for pain relief
- Extraction capacity is 750 litres/min
- Effectively removes waste anaesthetic gas before it pollutes the working environment
- Secondary function is that of local extract ventilation (LEV)

750000

PURAIR 750 MATERNITY AGSS

DESCRIPTION	PART No.	PRICE Ea.
Purair 750 Maternity AGSS	750000	
Purair 750 Birthing Pool	750000B	



161900N

PURAIR 500

- Portable AGSS system primarily designed for midwifery applications, can be used in other scenarios such as field hospitals
- Eliminates the risk of exposure to waste anaesthetic gases, especially when working in confined spaces
- Extraction capacity, 500 litres/min
- Simple to operate with robust design and lightweight carry case

DESCRIPTION	PART No.	PRICE Ea.
Purair 500 in Peli Case	161900N	

PURAIR SCAVENGING SYSTEMS



PURAIR 80 AGSS

DESCRIPTION	PART No.	PRICE Ea.
Purair 80 AGSS	131800	
Purair 80 AGSS Draeger	131800D	

- Designed as a stand alone scavenging unit for use with anaesthetic work stations that have an integrated patient air break
- Extraction capacity is 80 litres/min to current European flow rates
- Can be connected to a patient air break
- Occlusion and fault alarm

131800

PERSONAL MONITORS

For staff exposure to waste anaesthetic gas: All prices include, hire of Personal Monitors, analysis after use (using the appropriate HSE recommended analysis method) and issue of a written report detailing the results compared against the relevant COSHH (Control Of Substances Hazardous to Health) Standards.

Anaesthetic Agents: Choose from: Isoflurane, Enflurane, Halothane or Sevoflurane.



1613020

GAS ANAESTHETIC AGENT PERSONAL MONITOR

DESCRIPTION	QUANTITY	PART No.	PRICE Ea.
x1 Gas AA Personal Monitor	1	1613020	
x1 Gas AA Personal Monitor	2	1613020	
x1 Gas AA Personal Monitor	3	1613020	
x1 Gas AA Personal Monitor	4	1613020	
x1 Gas AA Personal Monitor	5+	1613020	

DESCRIPTION	QUANTITY	PART No.	PRICE Ea.
x2 Gas AA Personal Monitor	1	1613030	
x2 Gas AA Personal Monitor	2	1613030	
x2 Gas AA Personal Monitor	3	1613030	
x2 Gas AA Personal Monitor	4	1613030	
x2 Gas AA Personal Monitor	5+	1613030	

DESCRIPTION	QUANTITY	PART No.	PRICE Ea.
x3 Gas AA Personal Monitor	1	1613040	
x3 Gas AA Personal Monitor	2	1613040	
x3 Gas AA Personal Monitor	3	1613040	
x3 Gas AA Personal Monitor	4	1613040	
x3 Gas AA Personal Monitor	5+	1613040	



1613010

NITROUS OXIDE PERSONAL MONITOR

DESCRIPTION	QUANTITY	PART No.	PRICE Ea.
Nitrous Oxide Personal Monitor	1-4	1613010	
Nitrous Oxide Personal Monitor	5+	1613010	

EQUIPMENT MOUNTING | RAILS

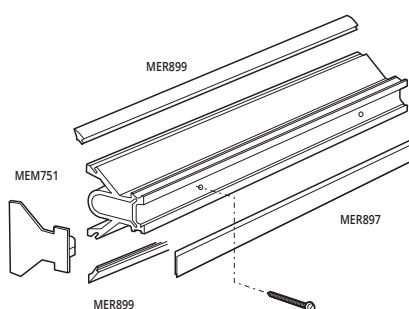


FRR510

EQUIPMENT RAILS

DESCRIPTION	PART No.	PRICE Ea.
Universal Rail, 1m long with 2m Edge Trim, 1m Cover Strip, 3 Fixing Screws and Plugs and 2 End Caps	FRR510	
Universal Rail, 2m long with 4m Edge Trim, 2m Cover Strip, 5 Fixing Screws and Plugs and 2 End Caps	FRR520	
Universal Rail, 3m long with 6m Edge Trim, 3m Cover Strip, 8 Fixing Screws and Plugs and 2 End Caps	FRR530	

- The MEC Universal Rail is an extruded aluminium section which fits directly to the wall, without additional distance pieces and fixing kits
- The Rail is suitable for both general and heavy-duty purposes
- Various Rail Clamps, including the DIN and Modura type fit this profile



RAIL PARTS

DESCRIPTION	PART No.	PRICE Ea.
Universal Rail Trim - 1m	MER899	
Universal Rail Cover Strip - 1m	MER897	
Universal Rail End Cap (Pairs)	MEM751-2	
Universal Rail - 1m, Without Trim and Cover Strip	MAI215	

DESCRIPTION	PART No.	PRICE Ea.
5.5 75mm Countersunk Galvanised Wood Screw (Pack 10)	BLF881	
8mm Plastic Wall Plug (Pack 10)	BLF901	

- Complete set of parts for Railing Systems

EQUIPMENT MOUNTING | DRIP MOUNTINGS AND STANDS



FCH911

- Extruded aluminium section
- Straight, horseshoe and oval shapes

CEILING MOUNTED DRIP TRACK

DESCRIPTION	PART No.	PRICE Ea.
Ceiling Mounted Drip Track - straight, 1m long with End Stops	FCH911	
Ceiling Mounted Drip Track - straight, 2m long with End Stops	FCH912	
Ceiling Mounted Drip Track - horseshoe shape, with Joining Piece and End Stops	FCH920	
Ceiling Mounted Drip Track - oval shape, with Joining Pieces	FCH930	



FCH750

- Fits Ceiling Mounted Drip Track
- With or without brakes
- Provides smooth operation

DRIP TRACK RUNNERS AND JOINING PIECES

DESCRIPTION	PART No.	PRICE Ea.
Ceiling Track Runner with brake for Ceiling Mounted Drip Track	FCH750	
Ceiling Track Runner without brake for Ceiling Mounted Drip Track	FCH755	
Ceiling Track Joining Piece	FCH760	

EQUIPMENT MOUNTING | DRIP MOUNTINGS AND STANDS

- Robust construction
- Lightweight
- Adaptable



CEILING MOUNTED DRIP HANGERS

DESCRIPTION	PART No.	PRICE Ea.
Ceiling Mounted Drip Hanger, 2 Drip Hooks Adjusted by Handscrew, 2.8m Ceiling Height	FCH100	
Ceiling Mounted Drip Hanger, 4 Drip Hooks Adjusted by Handscrew, 2.8m Ceiling Height	FCH200	
Ceiling Mounted Drip Hanger, 4 Drip Hooks Telescopic, 2.8m Ceiling Height	FCH400	
Ceiling Mounted Drip Hanger, 4 Drip Hooks Telescopic, 3.2m Ceiling Height	FCH410	
Ceiling Mounted Drip Hanger, 4 Drip Hooks Telescopic, 3.6m Ceiling Height	FCH420	
Ceiling Mounted Drip Hanger, 6 Drip Hooks Telescopic, 2.8m Ceiling Height	FCH600	
Ceiling Mounted Drip Hanger, 6 Drip Hooks Telescopic, 3.2m Ceiling Height	FCH610	
Ceiling Mounted Drip Hanger, 6 Drip Hooks Telescopic, 3.6m Ceiling Height	FCH620	

- 1m long
- Anodised aluminium



FRM026-001300

POLE AND DRIP HANGER ON RAIL CLAMP

DESCRIPTION	PART No.	PRICE Ea.
Pole and Drip Hanger on Rail Clamp, 25mm Diameter, 2 Drip Hooks	FRM025-001300	
Pole and Drip Hanger on Rail Clamp, 25mm Diameter, 3 Drip Hooks	FRM026-001300	
Pole and Drip Hanger on Rail Clamp, 32mm Diameter, 2 Drip Hooks	FRM027-001300	
Pole and Drip Hanger on Rail Clamp, 32mm Diameter, 3 Drip Hooks	FRM028-001300	

- 5 strong castors
- Height adjustable from 1.1m to 1.93m



FMD140

MOBILE DRIP STAND

Height Adjustable

DESCRIPTION	PART No.	PRICE Ea.
Mobile Drip Stand, 2 Drip Hooks	FMD120	
Mobile Drip Stand, 3 Drip Hooks	FMD130	
Mobile Drip Stand, 4 Drip Hooks	FMD140	

- 1m long
- Height adjustable
- Anodised aluminium



FRM035-001300

POLE AND DRIP HANGER ON RAIL CLAMP

Height Adjustable

DESCRIPTION	PART No.	PRICE Ea.
Drip Hanger on Rail Clamp, 2 Drip Hooks	FRM035-001300	
Drip Hanger on Rail Clamp, 3 Drip Hooks	FRM036-001300	

CYLINDER TROLLEYS AND BRACKETS



TH8803

CYLINDER TROLLEY

- Full range of Cylinder Trolleys available from sizes E to J
- Trolleys are finished in stove enamel
- Robust design with retaining bars or chains

DESCRIPTION	PART No.	PRICE Ea.
'E' Size (24 cu ft)	TH8803	
'F/G' Size (120 cu ft)	TH8801	
'J' Size (240 cu ft)	TH8800	



600603

PREMIER CYLINDER TROLLEYS

DESCRIPTION	PART No.	PRICE Ea.
'C/D' Size 12 Cylinder (4 wheeled)	600608	
'HX' Size	600603	
'G' Size (4 wheeled)	600604	
'J' Size (4 wheeled)	600605	



600601R

CYLINDER BRACKETS

With Rail Clamp

DESCRIPTION	PART No.	PRICE Ea.
'C/D' Cylinder Bracket With Rail Clamp	600601R	
'E' Cylinder Bracket With Rail Clamp	600602R	



600601

CYLINDER BRACKETS

DESCRIPTION	PART No.	PRICE Ea.
'C/D' Cylinder Metal Wall Bracket	600601	
'E' Cylinder Wall Bracket	600602	
Bed End 'C/D' Cradle	600607	



TH8822

CYLINDER RINGS AND RING BRACKET

DESCRIPTION	PART No.	PRICE Ea.
Cylinder Wall Bracket Only	TH8822	
'C' Size	TH8823	
'D/E' Size	TH8824	
'F' Size	TH8825	
'G' Size	TH8826	
'J' Size	TH8827	

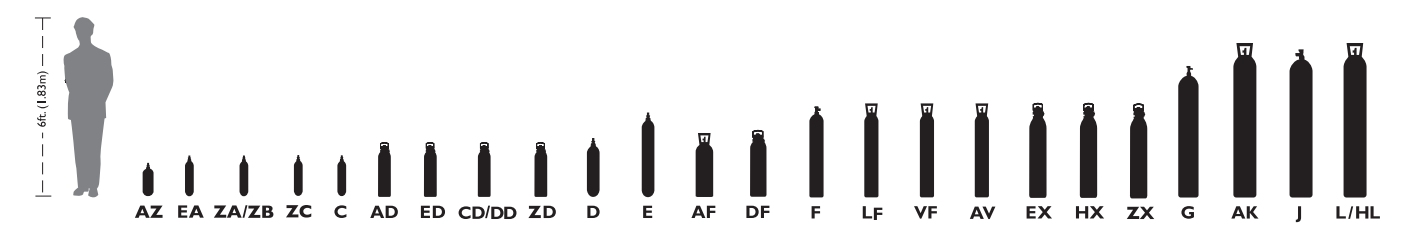
- Full range of Cylinder Rings available from sizes C to J
- Rings are fitted to the wall via a mating bracket
- Cylinder wall bracket available separately

MEDICAL CYLINDER CHART

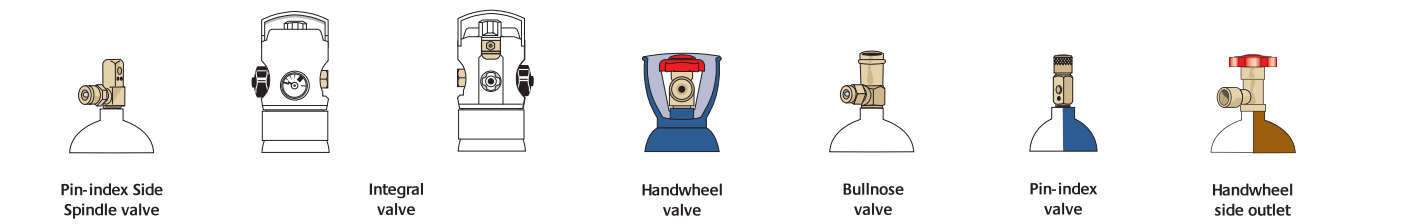
The Table and Charts below give indications of cylinder size and types of valves generally used. The Pin Index valves show how the pins are arranged on the valves for each gas application.

	C	D	E	F	G	J
Oxygen	Pin Index	Pin Index	Pin Index	Bullnose	Bullnose	Pin Index
Nitrous Oxide	Pin Index	Pin Index	Pin Index	Handwheel	Handwheel	Handwheel
Entonox		Pin Index		Pin Index	Pin Index	
Air			Pin Index	Bullnose	Bullnose	Pin Index

CYLINDER TYPES



VALVE TYPES



PIN INDEX VALVES



EMERGENCY KITS



EKS2UN

Other cylinder connections available

UNIVERSAL EMERGENCY KIT

- All components gas specific to BS 5682
- Quick action couplings enable a fuss free change-over to be completed in minimum time
- One kit will serve two cylinders
- 2 x Two Stage Bullnose Regulators with right angle adaptors
- 2 x Splitter Hose Assembly
- 1 x Splitter Unit
- 1 x Pendant Hose Assembly
- 1 Emergency Kit Box
- 2 x Pin Index Adaptors
- Combination Spanner
- Cylinder Key

DESCRIPTION	PART No.	PRICE Ea.
O2	EKS2UN	
Air-4	EKS2AUN	
Air-7	EKS2A7UN	
N2O - Handwheel	EKS2N2ON	
O2/N2O	EKS2MIXN	

300 BAR BACKFEED EMERGENCY KITS ISO 5145

DESCRIPTION	PART No.	PRICE Ea.
O2	EKS2N5	
O2/N2O	EKS2MIXN13	

CHANGE OVER VALVE HOSE ASSEMBLY



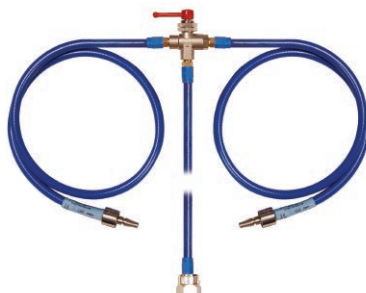
116405

CHANGE OVER VALVE HOSE ASSEMBLY

Change Over Valve Hose Assembly BS Probe

- 1 metre assemblies
- British Standard remote probes
- BS Probe

GAS	PART No.	PRICE Ea.
O2	116401	
O2/N2O	116402	
N2O	116403	
Air-7	116404	
Air-4	116405	



116403N

CHANGE OVER VALVE HOSE ASSEMBLY

Change Over Valve Hose Assembly

NIST Probe +NIST Nut

- 1 metre assemblies
- British Standard remote probes
- NIST Probe + NIST Nut

GAS	PART No.	PRICE Ea.
O2	116401N	
O2/N2O	116402N	
N2O	116403N	
Air-7	116404N	
Air-4	116405N	

TEST EQUIPMENT

MEC Test Equipment allows you to regularly check that medical gas pipelines are operating correctly to HTM02-01 guidelines. A comprehensive range of sets are available to test and calibrate medical gas pressure, flow and vacuum, ensure terminal units are gas specific and that active anaesthetic gas scavenging systems are adjusted to provide optimal performance. Particulate matter testing with purging allows checking for particulate contamination within the pipeline as well as purging from terminal unit or NIST points. Included in the range are dew point meters to identify contamination of pipeline systems by moisture.

- Two Pressure Guns to measure all eight pressure gases
- Third Gun to check vacuum
- Designed to check and calibrate British Standard Terminal Units for safe pressure and flow rates
- In compliance with HTM02-01 and relevant European Standards and all preceding standards
- Strong and sturdy Peli Box Case



2005NP

PRESSURE AND FLOW MEDICAL GAS TEST SET

DESCRIPTION	PART No.	PRICE Ea.
Pressure and Flow Medical Gas Test Set	2005NP	

- Two Pressure Guns to measure all seven pressure gases
- Third Gun to check vacuum
- Designed to check and calibrate British Standard Terminal Units for safe pressure and flow rates
- Additional test probes can be purchased to test alternative outlet types
- In compliance with HTM02-01 and relevant European Standards and all preceding standards



2005ND

DIGITAL PRESSURE AND FLOW MEDICAL GAS TEST SET

DESCRIPTION	PART No.	PRICE Ea.
Digital Pressure and Flow Medical Gas Test Set	2005ND	

UPGRADE KIT

DESCRIPTION	PART No.	PRICE Ea.
Upgrade with Peli Box	205700UP	

205700UP

- Pressure Gun to Update MEC Medical Two Gun Test Set
- In compliance with HTM02-01 and relevant European Standards and all preceding standards
- Includes: Pressure Gun, Nitric Oxide Probe and replacement box

- A complete set all in one box to carry out Test and Commissioning
- Includes Pressure and Flow, AGSS Test and Commissioning, Male Anti Confusion NIST, Anti Confusion Probes and Standard Purging test kits
- In compliance with HTM02-01 and relevant European Standards and all preceding standards



2004T

MEDICAL GAS TEST AND COMMISSIONING KIT

DESCRIPTION	PART No.	PRICE Ea.
Medical Gas Test and Commissioning Kit	2004	
As above with additional purpose-built Trolley	2004T	

- A complete set all in one box to carry out Test and Commissioning
- Includes Pressure and Flow, AGSS Test and Commissioning, Male Anti Confusion NIST, Anti Confusion Probes and Standard Purging test kits
- In compliance with HTM02-01 and relevant European Standards and all preceding standards



2004DT

DIGITAL MEDICAL GAS TEST AND COMMISSIONING KIT

DESCRIPTION	PART No.	PRICE Ea.
Digital Medical Gas Test and Commissioning Kit	2004D	
As above with additional purpose-built Trolley	2004DT	

TEST EQUIPMENT

- Set of six stainless steel gas specific probes
- Gases include O₂, O₂/N₂O, N₂O, Air-4 Bar, Air-7 Bar, Vacuum
- Calibrated to BS 5682
- In compliance with HTM02-01 and relevant European Standards and all preceding standards



20160

ANTI CONFUSION PROBE KIT

DESCRIPTION	PART No.	PRICE Ea.
Anti Confusion Probes	20160	

- Allows performance testing of six AGSS outlet points to BS 6834
- 0-20 Bar Manometer included
- Flow gauge, with adjusting tool and Allen Key
- In compliance with HTM02-01 and relevant European Standards and all preceding standards



19031100

AGSS TEST AND COMMISSIONING KIT

DESCRIPTION	PART No.	PRICE Ea.
AGSS Test and Commissioning Set	19031100	

- Set of six stainless steel gas specific probes
- Gases include O₂, O₂/N₂O, N₂O, Air-4 Bar, Air-7 Bar, Vacuum
- Calibrated to BS 5682
- In compliance with HTM02-01 and relevant European Standards and all preceding standards



20170N

FEMALE NIST ANTI CONFUSION TEST KIT

DESCRIPTION	PART No.	PRICE Ea.
NIST Anti Confusion Test Set	20170N	

- Set of six or nine stainless steel gas specific NIST probes
- Gases include O₂, O₂/N₂O, N₂O, Air-4 Bar, Air-7 Bar, Vacuum
- Nine includes CO₂, N, HEO₂ (Carbon Dioxide, Nitrogen, Heliox)
- Calibrated and manufactured to current industry standards
- In compliance with HTM02-01 and relevant European Standards and all preceding standards



20170-9

MALE NIST ANTI CONFUSION PROBE KIT

DESCRIPTION	PART No.	PRICE Ea.
Male NIST Anti Confusion Probes x6	20170	
Male NIST Anti Confusion Probes x9	20170-9	

AEROTEST ALPHA BREATHING MONITOR KIT

Monitor For Breathing Air Purity

- All the necessary components in a single system
- Concentrations can be determined either individually or simultaneously
- In compliance with EN12021 and relevant European Standards
- All components are housed ready for use in a handy carrying case
- Quick and easy to apply. In just five minutes, the Quick-Check indicates measurement results and provides information about the degree of contamination

DESCRIPTION	PART No.	PRICE Ea.
Aerotest Alpha Breathing Monitor	AEROALPHA	



AEROALPHA

TEST EQUIPMENT

- Polycarbonate filter holder 47mm
- 75/150Lpm flow rate jets
- Hydrophobic Membrane 47mm filter papers, 0.45(µm) pore size
- In compliance with HTM02-01 and relevant European Standards and all preceding standards



2002

STANDARD PARTICULATE AND PURGING KIT

Standard Test Set

DESCRIPTION	PART No.	PRICE Ea.
Particulate and Purging Kit	2002	

- Stainless steel filter holder 47mm
- 75/150Lpm flow rate jets
- Hydrophobic Membrane 47mm filter papers, 0.45(µm) pore size
- NIST and Terminal Unit connectivity
- In compliance with HTM02-01 and relevant European Standards and all preceding standards



2001

PARTICULATE AND PURGING MEDICAL GAS TEST KIT

Standard Test Set

DESCRIPTION	PART No.	PRICE Ea.
Particulate and Purging Kit	2001	

- 1, 2 and 4 kPa Orifices
- Meets current industry standard
- Flow gauge with AGSS hose and probe for connectivity allowing for basic flow rate tests
- In compliance with HTM02-01 and relevant European Standards and all preceding standards



232005

AGSS FLOW RATE TEST KIT

DESCRIPTION	PART No.	PRICE Ea.
AGSS Flow Rate Test Set	232005	

- A kit designed for test and commissioning of ambulance pipeline systems
- 0-10.5 Bar Pre Set Two Stage Regulator
- HTM02-01 Pressure Gun
- Test probes O2 and O2/N2O
- In compliance with HTM02-01 and relevant European Standards and all preceding standards



116205

VEHICLE PRESSURE AND FLOW TEST KIT

DESCRIPTION	PART No.	PRICE Ea.
Vehicle Pressure and Flow Test Set	116205	



200011

PRESSURE DROP TEST GUN

Plus choice of Digital or Analogue Pressure Gauge

- Measures pressure losses at NIST or Outlet Point
- Lockable valve to prevent tampering
- Ideal to test at AVSU and Manifold points
- 20054D Digital Pressure Gauge or Conventional Analogue Gauge

DESCRIPTION	PART No.	PRICE Ea.
Pressure Drop Test Gun (Digital Gauge) NIST	200011D	
Pressure Drop Test Gun (Analogue Gauge) NIST	200011	
Pressure Drop Test Gun (Digital Gauge) Probe	200011DP	
Pressure Drop Test Gun (Analogue Gauge) Probe	200011P	

TEST EQUIPMENT

- For measuring pressure losses at either NIST or Outlet Point
- Lockable valve to prevent tampering
- Ideal to test at AVSU and Manifold points



2010

STANDARD PRESSURE DROP TEST KIT

DESCRIPTION	PART No.	PRICE Ea.
Pressure Drop Test Kit with NIST Connections	2010	
Pressure Drop Test Kit with Probe Connections	2010P	

- For measuring pressure losses at either NIST or Outlet Point
- Lockable valve to prevent tampering
- Ideal to test at AVSU and Manifold points
- One or two 20054D Digital Pressure Gauge(s)



2011

PRESSURE DROP TEST KIT

Plus choice of 1 or 2 Digital Pressure Gauge(s)

DESCRIPTION	PART No.	PRICE Ea.
Pressure Drop Test Kit (x1 Digital Gauge) NIST	2011	
Pressure Drop Test Kit (x2 Digital Gauges) NIST	2012	
Pressure Drop Test Kit (x1 Digital Gauge) Probe	2011P	
Pressure Drop Test Kit (x2 Digital Gauges) Probe	2012P	

- Designed to Pressure test up to 6 pendant hoses at once
- -1 – 30 Bar Digital Pressure Gauge installed on manifold
- 10 Bar Pressure Regulator
- Test hose to connect to Manifold from Regulator
- Non gas specific NIST's allowing any Pressure Gas or Vacuum hose to be connected
- Test certificate included



200850

HOSE PRESSURE TEST RIG KIT

DESCRIPTION	PART No.	PRICE Ea.
Hose Pressure Test Rig	200850	

CO2 analyser specifically designed to monitor CO2 for the verification of incubators in research and pharmaceutical markets. Developed to be fast, simple to use and accurate.

- Improved accuracy on CO2 readings
- Quick verification of CO2 incubator levels
- Time saving dual temperature probes
- Built-in gas moisture removal
- CO2 0-20%, O2 0-100%
- Dual temperature probes 0 to 50°C
- Humidity sensor 0-100%
- Large data storage and user friendly software and download



G100ANZ

MEDI GAS CHECK G100

CO2 Incubator Analyser

DESCRIPTION	PART No.	PRICE Ea.
G100 Medi Gas Check	G100ANZ	
Plus O2 Sensor	G100ANZ-O2	

MEC Test Equipment demonstration videos available at mecmedical.com

TEST EQUIPMENT

Specifically designed for accurate measurement and verification of piped N2O, O2 and contaminants in hospitals. Measures four gases, N2O, O2, CO and CO2 within one analyser. Portable and user friendly.

- Easy user calibration
- Quick verification of gas quality
- User alarms
- Data storage with site and ID input
- Identify contamination with CO and CO2



G210ANZ

G210 GAS ANALYSER

Accurate quality assessment of N2O, O2, CO and CO2

DESCRIPTION	PART No.	PRICE Ea.
G210 Gas Analyser	G210ANZ	
Analyser Regulator Kit incl. Gas Specific Probes	G210REG	
G210 Software Package	G210DATA	
Carry Case	G210CASE	

G200 Gas Analyser for the accurate quality assessment of N2O. Cost effective monitor, easy to use portable system for dental departments or professionals using anaesthetic gases and surgeries.

- 0-1,000 ppm N2O
- Storage for 1,000 readings
- TWA calculated
- Leak detection
- Calculates EH40 occupational exposure limits
- Data download for graphing and reporting



G200ANZ

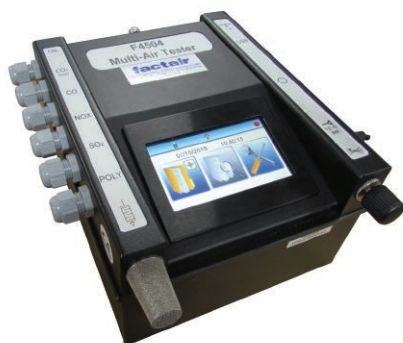
G200 GAS ANALYSER

Accurate quality assessment of N2O

DESCRIPTION	PART No.	PRICE Ea.
G200 Gas Analyser	G200ANZ	
G200 Software Package	G200DATA	
Carry Case	G200CASE	

Instrument for testing medical, surgical and breathing-air systems (HTM02-01, Pharmacopeia and EN12021) up to 10 bar. Built-in electronic dewpoint meter, electrochemical oxygen cell and digital flowmeter. Tests CO, CO2, NOX, SO2, H2S and Polytest using Draeger chemical reagent tubes and oil using the Impactor. Colour touch screen menu driven display and rechargeable batteries. The unit also has a battery tray which accommodates 6 AA alkaline type batteries. In the event that the rechargeable batteries are not sufficiently recharged then you can continue to use the instrument with either the alkaline batteries or a mains power supply. Built in memory, downloadable to PC safe-air tester results software. Supplied as standard in PELI carrying case, also provided with:

- Duracell (AA) alkaline batteries
- Universal mains power adapter
- USB tester results download cable
- F2193 connection adaptor with CEJN plug
- Tube tip cutter
- Travel container
- Operating Manual



F4504

MULTI-AIR TESTER

DESCRIPTION	PART No.	PRICE Ea.
Multi-Air Tester	F4504	
20 Bar Regulator	F3005	

These cost effective detector tubes are able to offer quick, on the spot measurements of many gases and vapours using the manual pump.

- Accurate and reliable results
- Simple method of oil detection without the need of calibration
- Measurement of oil content and impurities in medical gases
- Compatible with all syringe type pumps
- In compliance with HTM02-01 and relevant European Standards and all preceding standards



DETPUMP

GAS DETECTION TUBES AND PUMP

For the detection of oils and impurities in medical gas

DESCRIPTION	PART No.	PRICE Ea.
Gas Detection Syringe Pump	DETPUMP	

GAS DETECTION TUBES	PART No.	PRICE Ea.
CO	DETCO	
CO2	DETCO2	
H2O	DETH2O	
NO	DETNNOX	
SO2	DETSO2	

TEST EQUIPMENT

These cost effective detector tubes are able to offer quick, on the spot measurements of many gases and vapours using the manual pump.

- Accurate and reliable results
- Simple method of oil detection without the need of calibration
- Measurement of oil content and impurities in medical gases
- Compatible with all syringe type pumps
- In compliance with HTM02-01 and relevant European Standards and all preceding standards



DETPUMPDR

DRAEGER GAS DETECTION PUMP

DESCRIPTION	PART No.	PRICE Ea.
Draeger Gas Detection Pump	DETPUMPDR	
GAS DETECTION TUBES	PART No.	PRICE Ea.
CO	DTUBECO	
CO2	DTUBECO2	
H2O	DTUBEH2O	
NO	DTUBENO2	
SO2	DTUBESO2	

The Medi-Gas Check Medi-Qube is supplied in two forms, one for use with Oxygen (O2) and is therefore O2 clean and another for Medical and Surgical Air and other non-flammable medical gases. Only the Medi-Gas Check Medi-Qube for O2 must be used with O2.

- Fast, accurate and reliable results
- Quickest method of oil detection
- Measurement of oil content and impurities in medical gases
- Calibrated for use with Draeger polytest detector tubes and the new oil impactor



MEDI-QUBE

MEDI-QUBE

For the detection of oils and impurities in medical gas

DESCRIPTION	PART No.	PRICE Ea.
Medi-Qube (All Gases EXCEPT O2)	MEDI-QUBE	
Medi-Qube (O2 ONLY)	MEDI-QUBEO2	
Poly Test Oil Impactors	DETPOLY	



SERVOMEX

SERVOMEX MINIHD (5200)

Rugged Portable Gas Analyser

- Compact, reliable and easy to use with long life and minimal running costs
- Non-depleting paramagnetic or infrared measurement technology ensures the unit is always ready for use
- Fast, accurate, reliable and component specific, with confidence that observed values are credible and not due to background interference
- Robust, IP65 case with protective overmoulding
- Customer pre-tested software and long life Li-ion rechargeable batteries for maximum ease of use
- Two versions available: Internally pumped or "AFCD" version for pressurised samples
- Avoids the problems associated with electrochemical or other less robust methods of analysis

DESCRIPTION	PART No.	PRICE Ea.
SERVOMEX MiniHD (5200) Rugged Portable Gas Analyser	SERVOMEX	
SERVOMEX Case	SERVO-CASE	
SERVOMEX Bag	SERVO-BAG	

TEST EQUIPMENT

- Repeatedly fast measurements at low pressure from less than 15 minutes for t95 to -60°C
- Higher pressure measurements possible – up to 350 bar
- Long battery life: up to 48 hours of typical use between charges
- Intuitive application kits allow quick and straightforward connection to your sample point
- Durable, yet easy to handle and operate: designed for use in industrial environments
- 4-20mA external device input for transmitter calibration and validation
- Lightweight: less than 1.5kg
- 13 point traceable calibration certificate



- Wide measurement range
- Simple operation
- Integral sampling system
- Rugged industrial case
- ±2°Cdp accuracy
- Traceable to National Standards
- Powered by rechargeable battery
- Lowest cost of ownership due to minimal maintenance



DEWP2

MDM 300

Advanced Dew-point Hygrometer

DESCRIPTION	PART No.	PRICE Ea.
Advanced Dew-point Hygrometer	DEWP2	
Advanced Dew-point Easi Fit Sampling Kit	DEWPSMPL	

DEWP

EASIDEW PORTABLE

Easidew Portable Dew-point Hygrometer

DESCRIPTION	PART No.	PRICE Ea.
Easidew Portable Dew-point Hygrometer	DEWP	



20054D

DIGITAL PRESSURE GAUGE

DESCRIPTION	PART No.	PRICE Ea.
Gauge	20054D	
Rubber Boot	20054DB	
Case	20054DC	
Universal Probe with 7/16"-20 UNF	007716UNF	

- -1 to 30 bar pressure range
- Accuracy RT (room temperature) <0.1% FS
- Total Error Band (0...50°C) <0.2% FS
- 1000 hours continuous operation
- Pressure connection 7/16"-20 UNF (1/4" adaptor included)



29000

PNEUMATIC HAND PUMP KIT

Pressure/vacuum levels (small volumes)

DESCRIPTION	PART No.	PRICE Ea.
Pneumatic Hand Pump Kit	29000	

- With 3/8" BSP Parallel Female Connection
- A portable dual source of vacuum and pressure
- Volume control for fine adjustment
- Adjustable stroke for varying maximum pressure output (pressure protection)
- Quick fit connectors
- BSP or NPT adaptor set
- Full seal kit supplied



119901

RECHARGEABLE CRIMPING TOOL

With Carrying Case, 240V Charger and 18V Li-ion Battery

DESCRIPTION	PART No.	PRICE Ea.
Crimping Tool	119901	

- Easy to use
- For use with Ferrule 4131
- Supplied with MEC jaw set
- Certified suitable for manufacturing a compliant crimp when used with MEC hose and hose components
- Battery condition indicator
- One handed operation and release
- Head rotates for ease of access
- Tested to requirements of ISO 5359

TEST EQUIPMENT



MGPS1000WP

MGPS 1000 GA

The All-In-One piped medical gas analyser for HTM02-01/ISO7396/NFPA99 gas testing

- Measures O₂, N₂O, Water Vapour, CO₂, CO, SO₂, NO, NO₂, THC and GHC
- Integrated Oil, Polytest and Particulates Test.
- Connects to any terminal units or NIST with gas pressure up to 13 Bar.
- Paramagnetic sensor for O₂ (Electrochemical CE model)
- Infrared Absorption sensors for N₂O, CO₂ and water vapour.
- Advanced Electrochemical cells to measure CO, SO₂, NO_x down to 0.01ppm.
- Simultaneous measurement of all mandatory HTM-02-01/NFPA99 gases and oil.
- Infrared Absorption water vapour measurement – much faster than current capacitive, electronic or chilled mirror sensors.
- Halogenated Hydrocarbons/ VOC using Photo Ionisation Detector (PID)
- MGPSReports PC software to upload data and easily generate test reports
- Built-in filter provides dry and clean air for automatic Air Calibration when needed.
- Precise temperature and pressure calibration for stable readings and reduced gas calibration.



MGPS1000CE

- Hose is PTFE-lined and sealed at both ends to minimise hose purging time and ensures gas sample integrity.
- Password protected access to ensure the integrity of the tests.
- Test results are shown with out of range values highlighted according to HTM02-01 or NFPA99.
- Gas test results, particulates, oil, odour and Polytest results are securely stored with sample IDs and user notes.
- Data can be uploaded to the MGPS-Reports PC Software or USB
- Large 7" colour touch screen for excellent readability and control.
- Easily switch between HTM02-01 and NFPA99 standards
- Air plant monitoring option for the MGPS-Reports PC software to continuously monitor an air plant over its cycle (Contact MEC for details)

DESCRIPTION

PART No.

PRICE Ea.

O₂ 0-100% Paramagnetic, N₂O (0-100%) Co₂ (ppm) Co (ppm)

MGPS1000WP

O₂ 0-100% Paramagnetic, N₂O (0-100%) Co₂ (ppm) Co (ppm) + * Contaminants

MGPS1000WP-C

O₂ 0-100% Paramagnetic, N₂O (0-100%) Co₂ (ppm) Co (ppm) + * Contaminants + Oil + Particulates + Poly-Test

MGPS1000WP-A

O₂ 0-100% Paramagnetic, N₂O (0-100%) Co₂ (ppm) Co (ppm) + Dewpoint+ * Contaminants + Oil + Particulates + Poly-Test

MGPS1000WP-DP

O₂ 0-100% Electrochemical Cell, N₂O (0-100%) Co₂ (ppm) Co (ppm)

MGPS1000CE

O₂ 0-100% Electrochemical Cell, N₂O (0-100%) Co₂ (ppm) Co (ppm) + * Contaminants

MGPS1000CE-C

O₂ 0-100% Electrochemical Cell, N₂O (0-100%) Co₂ (ppm) Co (ppm) + * Contaminants + Oil + Particulates + Poly-Test

MGPS1000CE-A

O₂ 0-100% Electrochemical Cell, N₂O (0-100%) Co₂ (ppm) Co (ppm) + Dewpoint + * Contaminants + Oil + Particulates + Poly-Test

MGPS1000CE-DP

* Contaminants - NO (ppm), NO₂ (ppm), SO₂ (ppm)

Optional Gases THC (ppm) and HHC/VOC (ppm) for NFPA99 tests (Contact MEC for details)

TEST EQUIPMENT

TEST EQUIPMENT ACCESSORIES AND SPARES



24820012/10

BRITISH STANDARD UNIVERSAL PROBES

With Flow Rate Jets

MEC provides a range of calibrated Flow Rate test probes for checking flow rates of Terminal Units to current British Standards to meet the needs and requirements of HTM02-01.

- Stainless steel one piece probes
- Calibrated jets
- Engraved body with flow rate and outlet pressure
- Jets set at 400kPa (350LPM Jet set at 700kPa)

DESCRIPTION	PART No.	PRICE Ea.
10LPM Jet	24820012/10	
15LPM Jet	24820012/15	
20LPM Jet	24820012/20	
40LPM Jet	24820012/40	
50LPM Jet	24820012/50	
60LPM Jet	24820012/60	
75LPM Jet	24820012/75	
80LPM Jet	24820012/80	
100LPM Jet	24820012/100	
150LPM Jet	24820012/150	
200LPM Jet	24820012/200	
275LPM Jet	24820012/275	
350LPM Jet	24820012/350	



19031120

SET OF 5 AGSS TEST AND COMMISSIONING PROBES

DESCRIPTION	PART No.	PRICE Ea.
AGSS Test and Commissioning Probes	19031120	



20011

PARTICULATE FILTERS (BOX OF 25)

DESCRIPTION	PART No.	PRICE Ea.
Particulate Filters (Box of 25)	20011	



DEWP3

UNIVERSAL PROBE

With 6mm Connector

DESCRIPTION	PART No.	PRICE Ea.
Universal Probe with 6mm Connector	DEWP3	



NIST TEST PROBES

GAS	PART No.	PRICE Ea.
Nitrogen	20097	
CO2	20098	
O2/Heliox [He ≤ 80% (Volume Fraction)]	20099	



00714

UNIVERSAL PROBE

With 1/4" BSP

DESCRIPTION	PART No.	PRICE Ea.
Universal Probe with 1/4" BSP	00714	



23020

ORIFICE

2KPA

DESCRIPTION	PART No.	PRICE Ea.
Orifice 2KPA	23020	

- To Upgrade Pre-2011 232005 Test Set to meet HTM02-01 and relevant European Standards and all preceding standards

DEWP1

PARTICULATE FILTER CARTRIDGES (PACK OF 10)

For Easidew Portable Hygrometer

DESCRIPTION	PART No.	PRICE Ea.
Particulate Filters (Pack of 10)	DEWP1	

TEST EQUIPMENT



007

REMOTE UNIVERSAL PROBE BODY

PART No.	PRICE Ea.
007	

- Strictly for test purposes only



248

DIRECT UNIVERSAL PROBE BODY

3/8" BSP Male

PART No.	PRICE Ea.
248	

- Strictly for test purposes only



1414

NIST NUT

Non Gas Specific (NGS)

PART No.	PRICE Ea.
1414	

- Strictly for test purposes only

MEC provides a full range of test equipment to test medical gas pipeline systems to HTM 02-01 and ISO standards.



1416NGS

NIST PROBE WITH 'O' RING

Non Gas Specific (NGS)

PART No.	PRICE Ea.
1416NGS	

- Strictly for test purposes only



161717/1

LEAK DETECTION UNIT

DESCRIPTION	PART No.	PRICE Ea.
O2	161717/1	
O2/N2O	161717/2	
N2O	161717/3	
Air-7	161717/4	
Air-4	161717/5	

- Gas specific connection with non-interchangeability
- Lightweight construction
- Designed for use with British Standard Probe connectors
- On/Off Pressure Valve
- 0-11 Bar Pressure Gauge



00714BT

DIRECT UNIVERSAL PROBE

1/4" BSP Male

PART No.	PRICE Ea.
00714BT	

- Strictly for test purposes only

TEST EQUIPMENT RECALIBRATION



DESCRIPTION	PART No.	PRICE Ea.
Anti-Confusion Test Probes	RECALCON	
Anti-Confusion NISTs	RECALACN	
Anti-Confusion NIST Test Set	RECALACNF	
AGSS Flow Rate Test Set - Female	RECALDIS	
AGSS Test and Commissioning Set	RECALCOM	
Test Set for Pressure and Flow (Includes internal valve seals and 'O' Rings + Gauges + Probes)	RECAL3	
Digital Test Set for Pressure and Flow (Includes internal valve seals and 'O' Rings + Probes)	RECAL3D	
Medical Gas Test and Commissioning Kit	RECAL4	
Digital Medical Gas Test and Commissioning Kit	RECAL4D	
Pressure Drop Test Kit NIST	RECALPDK (NIST)	
Pressure Drop Test Kit Probe	RECALPDKP (Probe)	
Pressure Drop Test Kit NIST plus 1 Digital Gauge	RECALPDK1 (NIST)	
Pressure Drop Test Kit Probe plus 1 Digital Gauge	RECALPDKP1 (Probe)	
Pressure Drop Test Kit NIST plus 2 Digital Gauges	RECALPDK2 (NIST)	
Pressure Drop Test Kit Probe plus 2 Digital Gauges	RECALPDKP2 (Probe)	
Vehicle Pressure and Flow Set	RECALVEH	
Standard Particulate and Purging Kit	RECALPURG	
G210 Gas Analyser	RECALG210	
G200 Gas Analyser	RECALG200	

EMERGENCY KIT SERVICING

Annual Service

- Includes full test and inspect
- Replacement Seal and 'O' Rings

3-5 Year Service

- Includes full test and inspect
- Replacement Seal and 'O' Rings
- Replacement Hoses and Cartridge Assemblies
- New Labels

DESCRIPTION	PART No.	PRICE Ea.
Emergency Kit Service Annual Service	EKS2YR	
Emergency Kit Service 3-5 Year Service	EKS2SERV	

HIRE EQUIPMENT

DESCRIPTION	PART No.	PRICE Ea.
O2 Emergency Kit	EKS2UNRU	
Air-4 Emergency Kit	EKS2AUNRU	
Air -7 Emergency Kit	EKS2A7UNRU	
N2O Emergency Kit	EKS2N2ONRU	
Pressure and Flow Test Set	2005NPRU	
Digital Pressure and Flow Test Set	2005NDRU	
AGSS Test and Commissioning Set	19031100RU	
Vehicle Pressure and Flow Test Set	116205RU	
J Size Cylinder Trolley	TH8800RU	
G Size Cylinder Trolley	TH8801RU	
E Size Cylinder Trolley	TH8803RU	
High Flow Portable Suction Unit	SU001	
Disposable Suction Liners	DSL1	



MEC provide a range of equipment to enable the shut down of medical gasses in an area where maintenance is required. Equipment includes Backfeed Kits* Cylinder Trolleys and Portable Electric Suction units with Disposable Liners. Test Equipment is also available to hire during the calibration of existing Test Sets or to carry out routine testing of Medical Gas Pipelines.

* Backfeed kits includes 2 Two Stage Medical Regulators with Gas Specific Schraders, 2 Three meter hose assemblies, Schrader splitter unit, NIST Hose assembly, Bottle Keys, Bullnose to Pin Index Adaptors.

SCAVENGING PLANT | SINGLE PHASE

- Fully Compliant to HTM 02-01
- Inlet and Exhaust supplied with flexible coupling and copper pipeline connectors
- Anti-vibration mounts fitted to pump units
- Pre-set vacuum balance valve and pressure sensor
- Highly visible condensate drain flask fitted to exhaust
- Fully tested and certified prior to despatch
- Alarm or BSM output module optional extra



GSS260/1/24

SIMPLEX PLANT

Single Phase 240V 50Hz

PART No.	PRICE Ea.
GSS260/1/24	
GSS520/1/24	
GSS1040/1/24	

- Fully Compliant to HTM 02-01
- Inlet and Exhaust supplied with flexible coupling and copper pipeline connectors
- Anti-vibration mounts fitted to pump units
- Pre-set vacuum balance valve and pressure sensor
- Highly visible condensate drain flask fitted to exhaust
- Fully tested and certified prior to despatch
- Alarm or BSM output module optional extra
- Available in multiple configurations including "stacked" Duplex AGSS



GSD260/1/24

DUPLEX PLANT

Single Phase 240V 50Hz

PART No.	PRICE Ea.
GSD260/1/24	
GSD520/1/24	
GSD1040/1/24	

SCAVENGING PLANT | THREE PHASE

- Fully Compliant to HTM 02-01
- Inlet and Exhaust supplied with flexible coupling and copper pipeline connectors
- Anti-vibration mounts fitted to pump units
- Pre-set vacuum balance valve and pressure sensor
- Highly visible condensate drain flask fitted to exhaust
- Fully tested and certified prior to despatch
- Alarm or BSM output module optional extra



GSS260/3/24

SIMPLEX PLANT

Three Phase 415V 50Hz

PART No.	PRICE Ea.
GSS260/3/24	
GSS520/3/24	
GSS1040/3/24	
GSS1430/3/24	
GSS1820/3/24	
GSS2600/3/24	
GSS3770/3/24	

- Fully Compliant to HTM 02-01
- Inlet and Exhaust supplied with flexible coupling and copper pipeline connectors
- Anti-vibration mounts fitted to pump units
- Pre-set vacuum balance valve and pressure sensor
- Highly visible condensate drain flask fitted to exhaust
- Fully tested and certified prior to despatch
- Alarm or BSM output module optional extra
- Available in multiple configurations including "stacked" Duplex AGSS



GSD260/3/24

DUPLEX PLANT

Three Phase 415V 50Hz

PART No.	PRICE Ea.
GSD260/3/24	
GSD520/3/24	
GSD1040/3/24	
GSD1430/3/24	
GSD1820/3/24	
GSD2600/3/24	
GSD3770/3/24	

PLANT



AIR PLANT

MEC provides a full range of Air plant systems from Simplex to Quadruplex. Plants can be designed with different capacities, physical sizes with a choice of screw, reciprocating and scroll compressors.

- Fully Compliant to HTM 02-01
- Available in a full range of variations
- All interconnecting pipe-work and wiring is supplied
- Fail Safe control system in the event of power loss
- Integral Alarm System Interface indicator
- All plants are tested and certified and are covered by a full warranty



VACUUM PLANT

MEC provides a full range of Vacuum plant systems from Simplex to Quadruplex.

- Fully Compliant to HTM 02-01/ HTM 2022
- Available in a full range of variations
- All interconnecting pipework and wiring is supplied
- Fail Safe control system in the event of power loss
- Control panel is fitted with highly visible indicators and gauges
- Integral Alarm System Interface indicator
- All plants are tested and certified and are covered by a full warranty



MANIFOLDS

MEC provides a complete range of manifold systems including Automatic, Emergency Reserve, Emergency Standby and Double Tail Pipe.

- Fully Compliant to HTM 02-01
- Available in a full range of variations
- Supplied with pre-set regulators and pressure sensors
- Highly visible readouts for cylinder content and pipeline pressure
- Both safety relief and isolation valves
- Available for wall mounting or free standing floor mounted variants



A.V.S.U - AREA VALVE SERVICE UNIT

- Fully Compliant to HTM 02-01
- Fitted with BS EN 739 NIST connectors
- Fitted with a laser grooved Safe Break window
- Removable door for quick easy access, with reversible door hinges
- Sealed shut off NIST valves
- Standard pipework in 22mm and 28mm
- Each valve is supplied with blanking facility
- Every A.V.S.U is pressure tested with the valves tested for tightness



LOCKABLE LINE VALVES

All valves are designed for maximum life with requiring minimum maintenance.

- Fully Compliant to HTM 02-01
- Lockable in both open and closed positions
- Pressure tested
- Tested for tightness
- A complete tamper proof locking device can be incorporated
- Solenoid Line Valves Available which are electrically operated and fully comply with HTM 02-01
- NIST Lockable Line Valves, each is supplied with blanking facilities



ZONE SERVICE UNIT

MEC provides Architectural equipment that is designed for maximum life without compromising on quality as well as being cost effective and requiring minimal maintenance.

- Fully Compliant to HTM 02-01
- Available in Surface and Part recessed format
- Available from one to six gases
- Fitted with BS EN 739 NIST connectors
- Includes all internal pipework and stubbed
- Shire alarm panels fitted and tested, Connections outside of the Enclosure for easy fitting
- Pipework soldered using Inert Gas Joining
- Pressure Sensors fitted with minimum leak facility
- Other Alarms and colours available

ACCESSORIES AND SPARES

HOSE ACCESSORIES



- Manufactured to current European Standard
- Exceptional performance and renowned for reliability
- Reinforced anti-static, low toxic liner
- Cadmium and silicone free
- Resistant to a wide range of chemicals
- Phthalate free
- Anti-Microbial

119201R

ANTI-STATIC HOSE 30M ROLL PVC

12.3mm od x 6.3mm id

COLOUR	PART No.	PRICE Ea.
White - O2	119201R	
Black - Air	119202R	
Black/White - Air	119202BWR	
Blue - N2O	119203R	
Yellow - Vacuum	119204R	
Grey - CO2	119205R	
Blue/White - N2O/O2	119207R	
Yellow - Vacuum 8mm ID	119204/8IDR	

ACCESSORIES AND SPARES

HOSE ACCESSORIES



- Manufactured to current European Standard
- Does not contain plasticisers in any form
- Will not work harden
- Phthalate free
- Odour free

119202PHR

ANTI-STATIC HOSE 30M ROLL POLYURETHANE

12.7mm od x 6.7mm id

COLOUR	PART No.	PRICE Ea.
White - O2	119201PHR	
Black - Air	119202PHR	
Blue - N2O	119203PHR	
Yellow - Vacuum	119204PHR	
Grey - CO2	119205PHR	
Blue/White - N2O/O2	119207PHR	
Brown/White - Heliox	119209PHR	



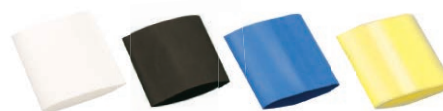
4131

FERRULE

For Anti-Static Hoses (above)

DESCRIPTION	PART No.	PRICE Ea.
Ferrule	4131	

- Stainless steel
- Site hole indicator



HEAT SHRINKING SLEEVING

25mm Length - Pack 10

COLOUR	PART No.	PRICE Ea.
White	CS1P	
Black	CS2P	
Blue	CS3P	
Yellow	CS4P	

ORB TERMINAL UNIT SPARES AND ACCESSORIES



202211UK

UPGRADE KITS

Front cover and ORB Second Fix

- Upgrades MEC Terminal Units to ORB Smoothflow
- Two part kit easy to fit
- Gas specific sockets with cover plate
- For use with MEC Gas outlets only
- Fully compliant with all current standards

DESCRIPTION	PART No.	PRICE Ea.
O2 ORB Upgrade Kit	202211UK	
O2/N2O ORB Upgrade Kit	202212UK	
N2O ORB Upgrade Kit	202213UK	
Air-7 ORB Upgrade Kit	202214UK	
Air-4 ORB Upgrade Kit	202215UK	
Vacuum ORB Upgrade Kit	202216UK	

ACCESSORIES AND SPARES

ORB TERMINAL UNIT SPARES AND ACCESSORIES



202216N

ORB SMOOTHFLOW SPARES

Cartridge Assembly

- For use when servicing MEC outlets only

Second Fix

- Gas specific sockets
- For use with MEC Gas outlets only
- Fully compliant with all current standards

DESCRIPTION	PART No.	PRICE Ea.
ORB Cartridge Assembly	202210	
ORB Cartridge Assembly + 1st Fix 'O' Ring	202210/S	
ORB Adaptor Plate 'O' Ring (Pkt 25)	202148P	
ORB O2 2nd Fix	202211N	
ORB O2/N2O 2nd Fix	202212N	
ORB N2O 2nd Fix	202213N	
ORB Air-7 2nd Fix	202214N	
ORB Air-4 2nd Fix	202215N	
ORB Vacuum 2nd Fix	202216N	
Heliox	202219N	



202211NP

DOUBLE TERMINAL UNIT/ PENDANT 2ND FIX

DESCRIPTION	PART No.	PRICE Ea.
O2 Second Fix Pendant ORB	202211NP	
O2/N2O Second Fix Pendant ORB	202212NP	
N2O Second Fix Pendant ORB	202213NP	
Air-7 Second Fix Pendant ORB	202214NP	
Air-4 Second Fix Pendant ORB	202215NP	
Vacuum Second Fix Pendant ORB	202216NP	



2022BP

TERMINAL UNIT BLANKING PLUG

DESCRIPTION	PART No.	PRICE Ea.
Terminal Unit Blanking Plug	2022BP	
Air Terminal Unit Blanking Plug	2025BP	

FLOWMETER ACCESSORIES



601200HA

- 1m coloured gas specific anti-static hose
- British Standard remote probe
- 44mm rail mounting bracket

FLOWMETER ADAPTOR

With 1m Hose Assembly - Railmount

GAS	PART No.	PRICE Ea.
O2 Bracket and Hose Assembly	601200HA	
Air-4 Bracket and Hose Assembly	601205HA	

Alternative hose length may be specified at time of order

ACCESSORIES AND SPARES

FLOWMETER ACCESSORIES



60168P

TUBING NIPPLE

9/16"x18 UNF

QUANTITY	PART No.	PRICE Ea.
Pack 10 White	60168P	
Pack 10 Black	60168BLP	

• White or Black Acetal Plastic



116224

NASAL CANNULAE

With 1.8m Tube

DESCRIPTION	PART No.	PRICE Ea.
Nasal Cannulae inc. 1.8m Tube	116224	



821130

HUMIDIFIERS

DESCRIPTION	PART No.	PRICE Ea.
Disposable	821130	
Autoclavable	821135	

REGULATOR ACCESSORIES



116221

FACE MASK

With 1.8m Tube

DESCRIPTION	PART No.	PRICE Ea.
Adult inc. 1.8m Tube	116221	
Paediatric inc. 1.8m Tube	116222	



116102

COMBINATION SPANNER

DESCRIPTION	PART No.	PRICE Ea.
Combination Spanner	116102	

- Enables on/off function on Bullnose Cylinders
- For tightening Bullnose regulators to cylinders



160202-02

O2 BULLNOSE TO PIN INDEX CYLINDER BLOCK

DESCRIPTION	PART No.	PRICE Ea.
O2 Bullnose to Pin Index Cylinder Block	160202-02	

ACCESSORIES AND SPARES

REGULATOR ACCESSORIES



6057

PIN INDEX YOKE

Yoke Only

GAS	PART No.	PRICE Ea.
O2	6057	
Air	6058	
N2O	6057/3	
O2/N2O	6057/2	
CO2	6055	



185706

REGULATOR SPARES

DESCRIPTION	PART No.	PRICE Ea.
S/Stage Contents Gauge NPT	185706NPT	
Two Stage Contents Gauge	185715	
Two Stage 0-16 Bar Gauge	185707	
Bullnose 'O' Ring (Pack 10)	185703P	
Bodok Seal	185705	



116108

PIN INDEX KEY

DESCRIPTION	PART No.	PRICE Ea.
Pin Index Key	116108	

- Enables on/off function on Pin Index Cylinders



FB1

O2 FLASH BACK ARRESTOR

DESCRIPTION	PART No.	PRICE Ea.
O2 Flash Back Arrestor	FB1	



116112

BOTTLE SPINDLE KEY

DESCRIPTION	PART No.	PRICE Ea.
Bottle Spindle Key	116112	



160201-02

BULLNOSE/PIN INDEX ADAPTOR

Right Angle

DESCRIPTION	PART No.	PRICE Ea.
O2	160201-02	
Air	160201-AIR	
N2O	160201-N2O	
O2/N2O	160201-MIX	
CO2	160201-CO2	

- To enable use of standard Bullnose regulator on Pin Index cylinder



116100

RATCHET CYLINDER KEY

DESCRIPTION	PART No.	PRICE Ea.
Ratchet Cylinder Key	116100	

ACCESSORIES AND SPARES

SUCTION ACCESSORIES

- Autoclavable polysulphone collection jar
- Complete with cap assembly and overflow safety valve



FSP795-110000

AUTOCLAVABLE RECEIVER JAR

DESCRIPTION	PART No.	PRICE Ea.
Autoclavable Receiver Jar 1500ml	FSP795-110000	
Autoclavable Receiver Jar 2000ml	FSP795-120000	
Autoclavable Receiver Jar 1500ml Mounted on Rail Clamp	FSP795-111200	
Autoclavable Receiver Jar 2000ml Mounted on Rail Clamp	FSP795-121200	
Autoclavable Receiver Jar 1500ml Mounted on Male 'V' Wedge	FSP795-111700	
Autoclavable Receiver Jar 2000ml Mounted on Male 'V' Wedge	FSP795-121700	



BLH033R

PVC SUCTION TUBING

30m

DESCRIPTION	PART No.	PRICE Ea.
Suction Tubing Clear 30m	BLH032R	
Suction Tubing Yellow 30m	BLH033R	



BLH031

SILICONE TUBING

DESCRIPTION	PART No.	PRICE Ea.
Silicone Tubing Per Metre	BLH031	
Silicone Tubing 25m Roll	BLH031R	



BIF035

DISPOSABLE HYDROPHOBIC FILTER

DESCRIPTION	PART No.	PRICE Ea.
Box of 10 Filters	BIF035	



BIF001

DISPOSABLE BACTERIAL FILTER

DESCRIPTION	PART No.	PRICE Ea.
Box of 10 Filters	BIF001	

DISPOSABLE HYDROPHOBIC FILTER

DESCRIPTION	PART No.	PRICE Ea.
Box of 10 Filters	BIF013	

ELECTRIC FOOT SWITCH

Air Operated with Electric on/off Actuator

DESCRIPTION	PART No.	PRICE Ea.
Electric Foot Switch	ASE910	

HEAVY DUTY ELECTRIC FOOT SWITCH

Die-case Metal

DESCRIPTION	PART No.	PRICE Ea.
Heavy Duty Electric Foot Switch	ASE915	

ACCESSORIES AND SPARES

AMBULANCE PIPELINE ACCESSORIES



116105

'T' PIECE

DESCRIPTION	PART No.	PRICE Ea.
'T' Piece	116105	



116106ST

STRAIGHT HOSE CONNECTOR

DESCRIPTION	PART No.	PRICE Ea.
Straight Hose Connector	116106ST	



116198P

FASTENERS AND CLIPS

DESCRIPTION	PART No.	PRICE Ea.
Pipeline Clips (Pk 100)	116198P	
Self-tapping Screw (Pk 100)	116199P	

AGSS ACCESSORIES AND SPARES



231746

AGSS PROBE

Euro Version Type 1L

DESCRIPTION	PART No.	PRICE Ea.
AGSS Probe Type 1L	231746	

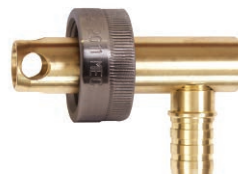
- Stainless Steel body



231740

AGSS PROBE ASSEMBLY

DESCRIPTION	PART No.	PRICE Ea.
AGSS Probe Assembly 16mm Tail	231740	
AGSS Probe Assembly 12mm Tail	231740SP	



231741RA

AGSS 90° PROBE ASSEMBLY

DESCRIPTION	PART No.	PRICE Ea.
AGSS 90° Probe Assembly	231741RA	



231742

AGSS NUT

DESCRIPTION	PART No.	PRICE Ea.
AGSS Nut	231742	



231743

AGSS 'O' RING

DESCRIPTION	PART No.	PRICE Ea.
AGSS 'O' Ring	231743	

ACCESSORIES AND SPARES

AGSS ACCESSORIES AND SPARES



14160P

NIST SPARES

GAS	PART No.	PRICE Ea.
NIST Probe 'O' Ring Pack 10	14160P	



231747/8

AGSS ADJUSTING TOOL SET

DESCRIPTION	PART No.	PRICE Ea.
AGSS Adjusting Tool Set (MEC only)	231747/8	



231713P

AGSS TERMINAL UNIT BLANKING PLUG

DESCRIPTION	PART No.	PRICE Ea.
AGSS Terminal Unit Blanking Plug	231713P	



181916R

CLEAR PVC BRAIDED HOSE

30m Roll - (23mm OD x 16mm ID)

DESCRIPTION	PART No.	PRICE Ea.
Clear PVC Braided Hose	181916R	

- Glass clear clarity for excellent visibility
- Excellent resistance to abrasion
- Manufactured from cadmium and silicone-free materials using a special low toxic, odourless PVC formulation



231739R

REINFORCED PVC HOSE

50m Roll - (19mm OD x 12.7mm ID)

DESCRIPTION	PART No.	PRICE Ea.
Reinforced PVC Purple Hose	231739R	

- Superior quality PVC specifically selected for higher working pressures in both low and high temperature environments
- Extremely flexible and durable
- Excellent abrasion, ageing and ultra-violet ray resistance
- Good anti-kink characteristics and minimum flow loss



181934

TRANSFER HOSE ASSEMBLY

2.4m

DESCRIPTION	PART No.	PRICE Ea.
Transfer Hose Assembly	181934	

- Complete with Pressure Relief Valve (PRV)
- 30mm Male Connector



181919

FERRULE

For Clear PVC Braided Hose

DESCRIPTION	PART No.	PRICE Ea.
Ferrule for Clear PVC Hose	181919	



231734

FERRULE

For Reinforced PVC Purple PVC Hose

DESCRIPTION	PART No.	PRICE Ea.
Ferrule for Purple PVC Hose	231734	



12800013

DISPOSAL HOSE

3m

DESCRIPTION	PART No.	PRICE Ea.
Disposal Hose	12800013	

- AGSS Probe Assembly
- Top swivel assembly for use with MEC receiving system only

ACCESSORIES AND SPARES

AGSS ACCESSORIES AND SPARES



12800013PR

DISPOSAL HOSE - AGSS PROBES

3m - (23mm OD x 16mm ID)

DESCRIPTION	PART No.	PRICE Ea.
Disposal Hose	12800013PR	
Disposal Hose 90°	12800013PRRA	

- AGSS Probe Assembly at both ends

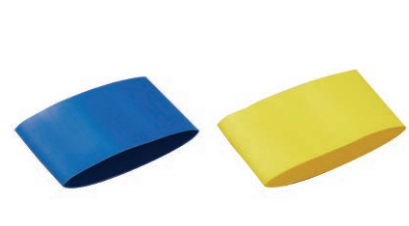


12800013PRSP

DISPOSAL HOSE - AGSS PROBES

3m - (19mm OD x 12mm ID)

DESCRIPTION	PART No.	PRICE Ea.
Disposal Hose	12800013PRSP	
Disposal Hose 90°	12800013PRSPRA	



HEAT SHRINK

Pack of 10

DESCRIPTION	PART No.	PRICE Ea.
Blue Heat Shrink (Pack 10)	RS3P	
Yellow Heat Shrink (Pack 10)	RS4P	

MOUNTING CLAMPS AND BRACKETS



40208

WALL MOUNTING BRACKET

DESCRIPTION	PART No.	PRICE Ea.
Wall Mounting Bracket	40208	

- 'V' Wedge Mounting Bracket

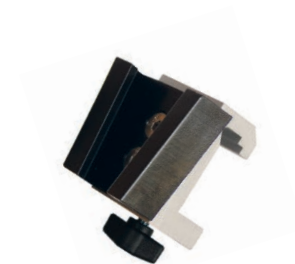


40207

RAIL MOUNTING BRACKET

DESCRIPTION	PART No.	PRICE Ea.
Rail Mounting Bracket	40207	

- 44mm Standard Universal Rail Bracket



40209

HORIZONTAL RAIL CLAMP + 'V' WALL BRACKET

DESCRIPTION	PART No.	PRICE Ea.
Horizontal Rail Clamp 'V' Wall Bracket	40209	

- 44mm Standard Universal Rail Bracket
- Complete with 'V' Bracket



FRB202

UNIVERSAL RAIL CLAMP

DESCRIPTION	PART No.	PRICE Ea.
Universal Rail Clamp - for Mounting Equipment onto Rail Clamp	FRB202	
Universal Rail Clamp with Female 'V' Wall Plate Fitted	FRB212	

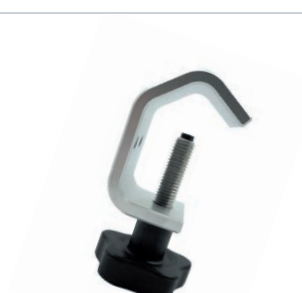
- Rail clamps for mounting onto equipment or for mounting equipment on to rail clamps
- Option of Female 'V' wall plate
- Anodised aluminium



12800068

POLE CLAMP WITH PARALLEL BLENDER BRACKET

DESCRIPTION	PART No.	PRICE Ea.
Pole Clamp with Parallel Blender Bracket	12800068	



12800061

POLE CLAMP

DESCRIPTION	PART No.	PRICE Ea.
Pole Clamp	12800061	

ACCESSORIES AND SPARES



40217PA

STANDARD UNIVERSAL RAIL CLAMP

19mm

DESCRIPTION	PART No.	PRICE Ea.
Standard Universal Rail Clamp - 19mm	40217PA	

- With clearance holes
- Anodised aluminium



12800060

POLE CLAMP WITH 'V' BRACKET

20-38mm Diameter Pole

DESCRIPTION	PART No.	PRICE Ea.
Pole Clamp + 'V' Bracket	12800060	

- For use with 20-38mm diameter poles
- Complete with 'V' Bracket



FRB209

FEMALE SLIDE BRACKET

DESCRIPTION	PART No.	PRICE Ea.
Female Slide Bracket, Countersunk Holes	FRB209	

PURAIR SCAVENGING SYSTEMS ACCESSORIES



181931

PRESSURE RELIEF VALVE (PRV)

DESCRIPTION	PART No.	PRICE Ea.
Pressure Relief Valve (PRV)	181931	

- 30mm Female Connector
- 22mm Male Connector
- 10 cm (1 kPa) H₂O pre-set valve



181933R

22MM TRANSFER HOSE

50m Roll (Cuffed at 40cm)

DESCRIPTION	PART No.	PRICE Ea.
22mm Transfer Hose	181933R	



181932P

30MM MALE CONICAL CONNECTOR

Pack of 10

DESCRIPTION	PART No.	PRICE Ea.
30mm Male Conical Connector	181932P	

- 30mm Male Connector
- 22mm Male Connector



181932FP

30MM FEMALE CONICAL CONNECTOR

Pack of 10

DESCRIPTION	PART No.	PRICE Ea.
30mm Female Conical Connector	181932FP	

- 30mm Female Connector
- 22mm Male Connector

ACCESSORIES AND SPARES



181936

MALE/FEMALE TRANSFER HOSES

DESCRIPTION	PART No.	PRICE Ea.
30mm Male/Female Transfer Hose 2.4M	181936	
30mm Male/Female Transfer Hose 3M	181936X3	
30mm Male/Female Transfer Hose 3.2M	181936X3.2	
30mm Male/Female Transfer Hose 4M	181936X4	



116226

MOUTH PIECE

DESCRIPTION	PART No.	PRICE Ea.
Midi Breathing Filter With Mouthpiece	116226	



800450

LIMITED LIFE PARTICLE FILTER

DESCRIPTION	QUANTITY	PART No.	PRICE Ea.
Limited Life AGSS Particle Filter	Bag 100	800450	
Limited Life AGSS Particle Filter	Bag 50	800451	
Limited Life AGSS Particle Filter	Bag 25	800452	

DESCRIPTION	QUANTITY	PART No.	PRICE Ea.
Filter Hose Connector for above including Ferrules	Pack 2	800460P	

- 2 week recommended life Anaesthetic Gas Scavenging filters



750048

DRAIN TRAP HOSE ASSEMBLY

For Purair 750

DESCRIPTION	PART No.	PRICE Ea.
Drain Trap Hose Assembly	750048	

- Medium self-sealing water trap (70ml)
- 30mm Male Connector
- 30mm Female Connector



750052P

DRAIN TRAP

Pack of 10

DESCRIPTION	PART No.	PRICE Ea.
Drain Trap (Pack 10)	750052P	

- Medium self-sealing water trap (70ml)

ACCESSORIES AND SPARES

EMERGENCY KIT ACCESSORIES AND SPARES



EKS2BOXN

EMERGENCY KIT BOX

DESCRIPTION	PART No.	PRICE Ea.
Emergency Kit Box	EKS2BOXN3	



19221HANX0.3

SCHRADER HOSE

300mm

GAS	PART No.	PRICE Ea.
O2	19221HANX0.3	
O2/N2O	19222HANX0.3	
N2O	19223HANX0.3	
Air-7	19224HANX0.3	
Air-4	19225HANX0.3	

- 300mm coloured gas specific anti-static hose
- British Standard NIST Nut + NIST Probe assembly
- British Standard gas specific Schrader



EKH3MIX

SPLITTER HOSE

3m

GAS	PART No.	PRICE Ea.
O2	EKH3	
Air-4	EKH3A	
Air-7	EKH3A7	
O2/N2O	EKH3MIX	
N2O	EKH3N2O	

- 3m coloured gas specific anti-static hose
- British Standard remote probes
- MRI compatible



185705

BODOK SEAL

DESCRIPTION	PART No.	PRICE Ea.
Bodok Seal	185705	

ACCESSORIES AND SPARES



SPARES FOR 2005NP/D TEST SET

DESCRIPTION	PART No.	PRICE Ea.
O2 Probe	20081	
O2/N2O Probe	20082	
N2O Probe	20083	
Air-7 Probe	20084	
Air-4 Probe	20085	
Vacuum Probe	20086	
NO Probe	20087	
Heliox Probe	20089	
DESCRIPTION	PART No.	PRICE Ea.
Pressure Gauge	20054	
Vacuum Gauge	205602	
DESCRIPTION	PART No.	PRICE Ea.
Storm Test Set Box	20056D	



DIN TEST PROBES

(German Standard)

GAS	PART No.	PRICE Ea.
O2	53100038TSP	
N2O	53100039TSP	
Air-800	53100040TSP	
Vacuum	53100041TSP	
Air	53100042TSP	
CO2	53100043TSP	



MEC Medical Ltd | MEC House, 8 Fountain Drive, Mead Lane, Hertford, SG13 7UB, United Kingdom

☎ +44 (0) 1992 661 111 sales@mecmedical.com www.mecmedical.com